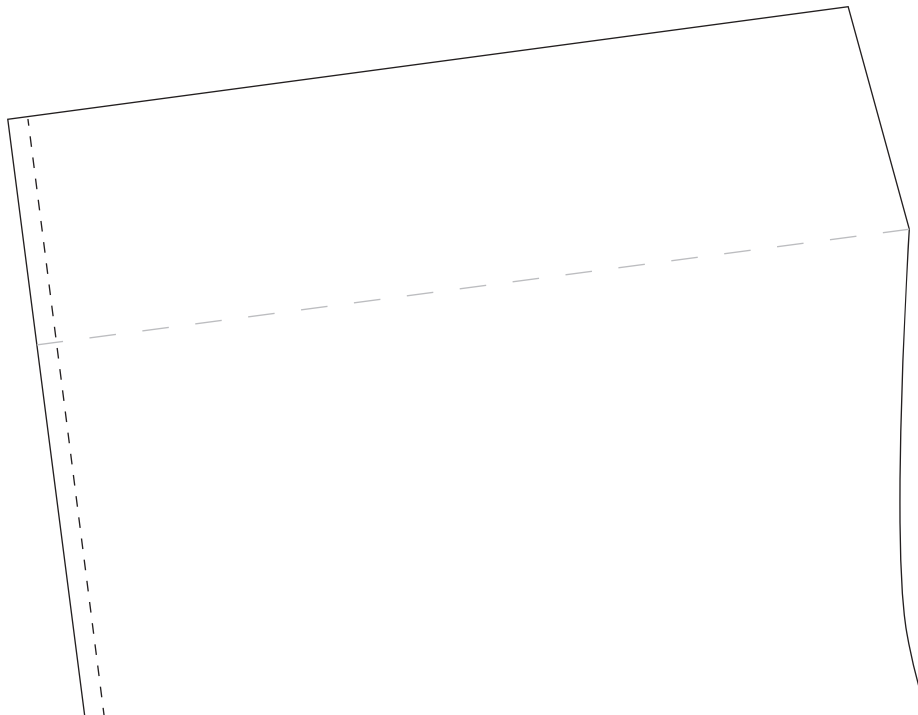
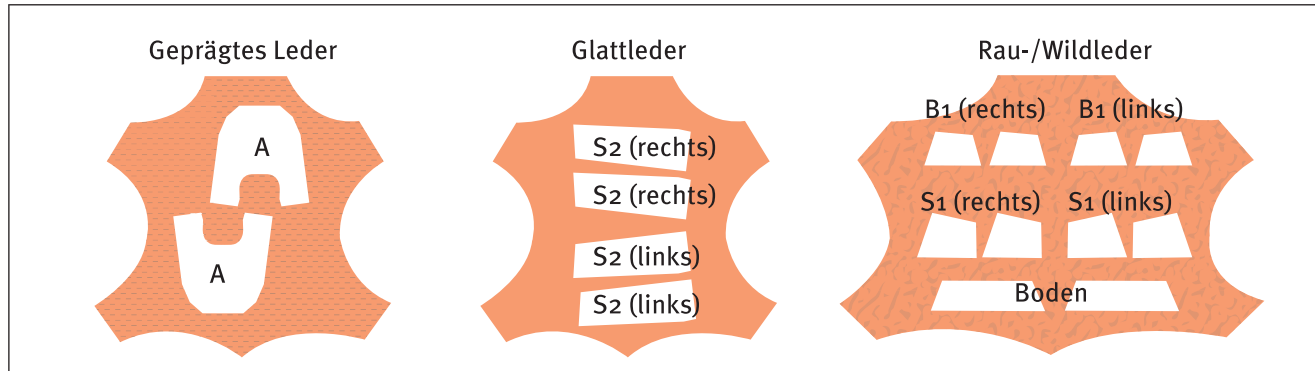




Kontrollkästchen - bitte nachmessen und prüfen, ob exakt Breite/Höhe 1 cm betragen

Zuschneideplan



2mm Nahtzugabe

Shopper
S2
[Seite]
4 x Glattleder

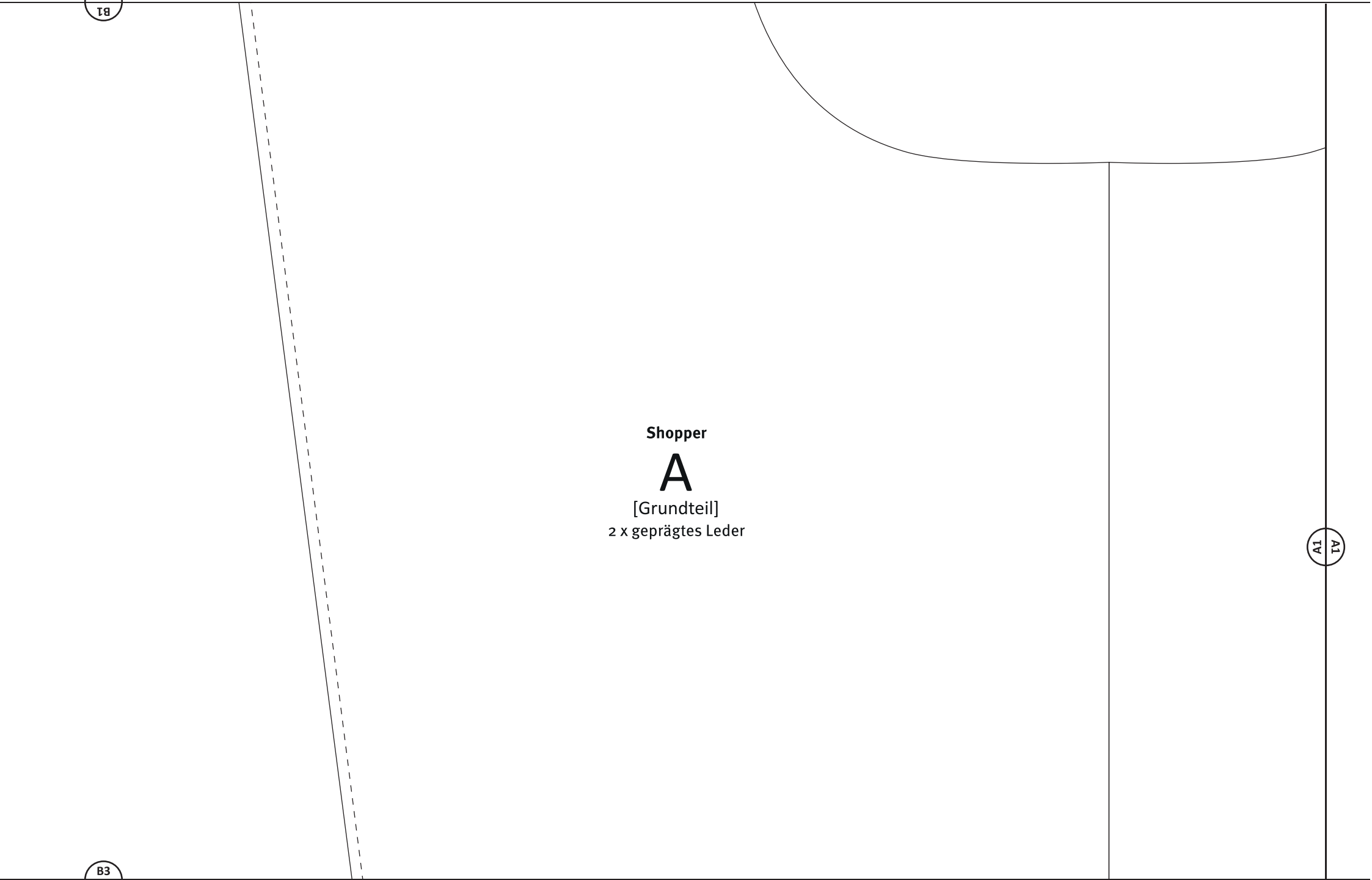
Kante an S1

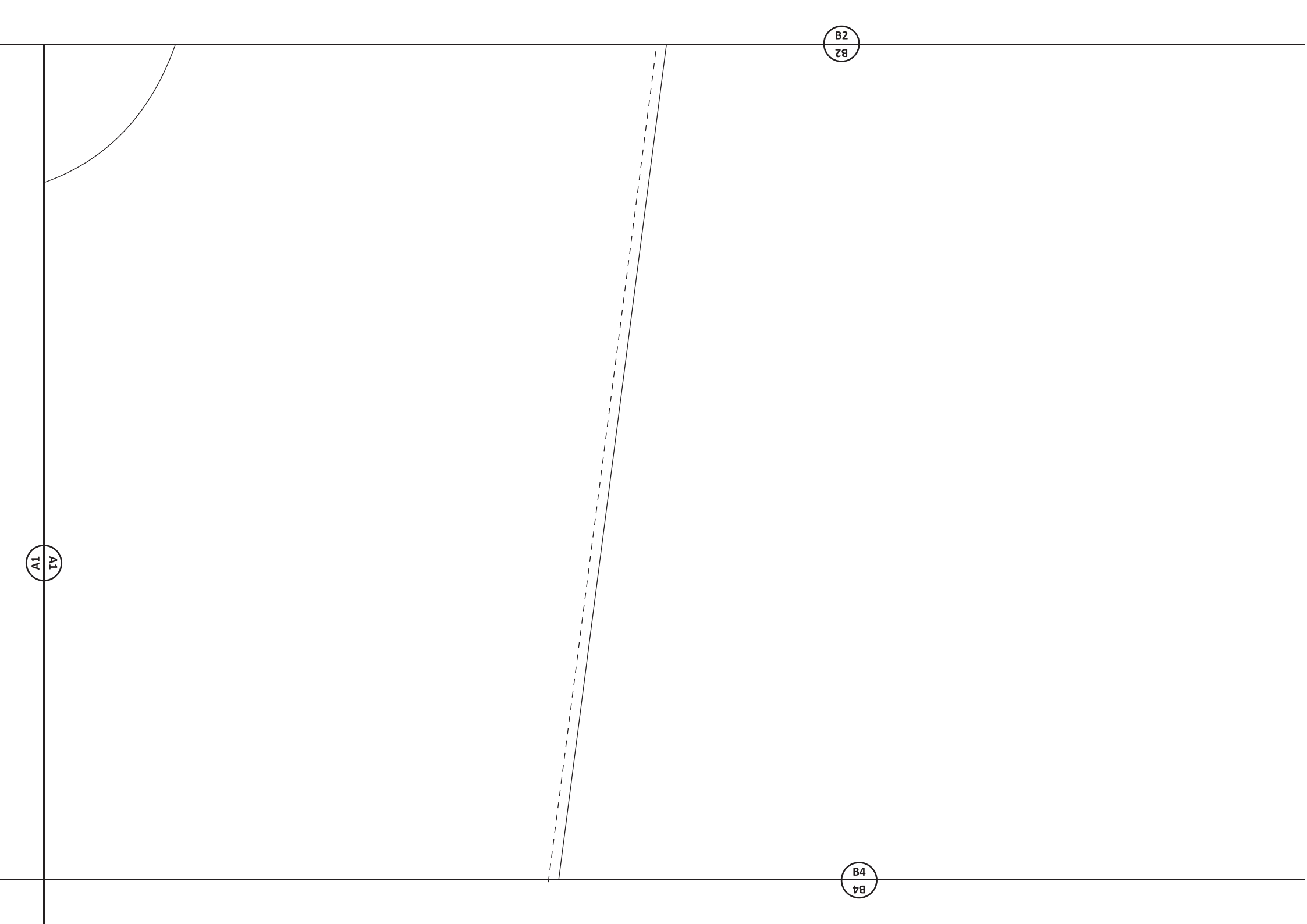
B1
18

B3
18

A1
18

Shopper
A
[Grundteil]
2 x geprägtes Leder



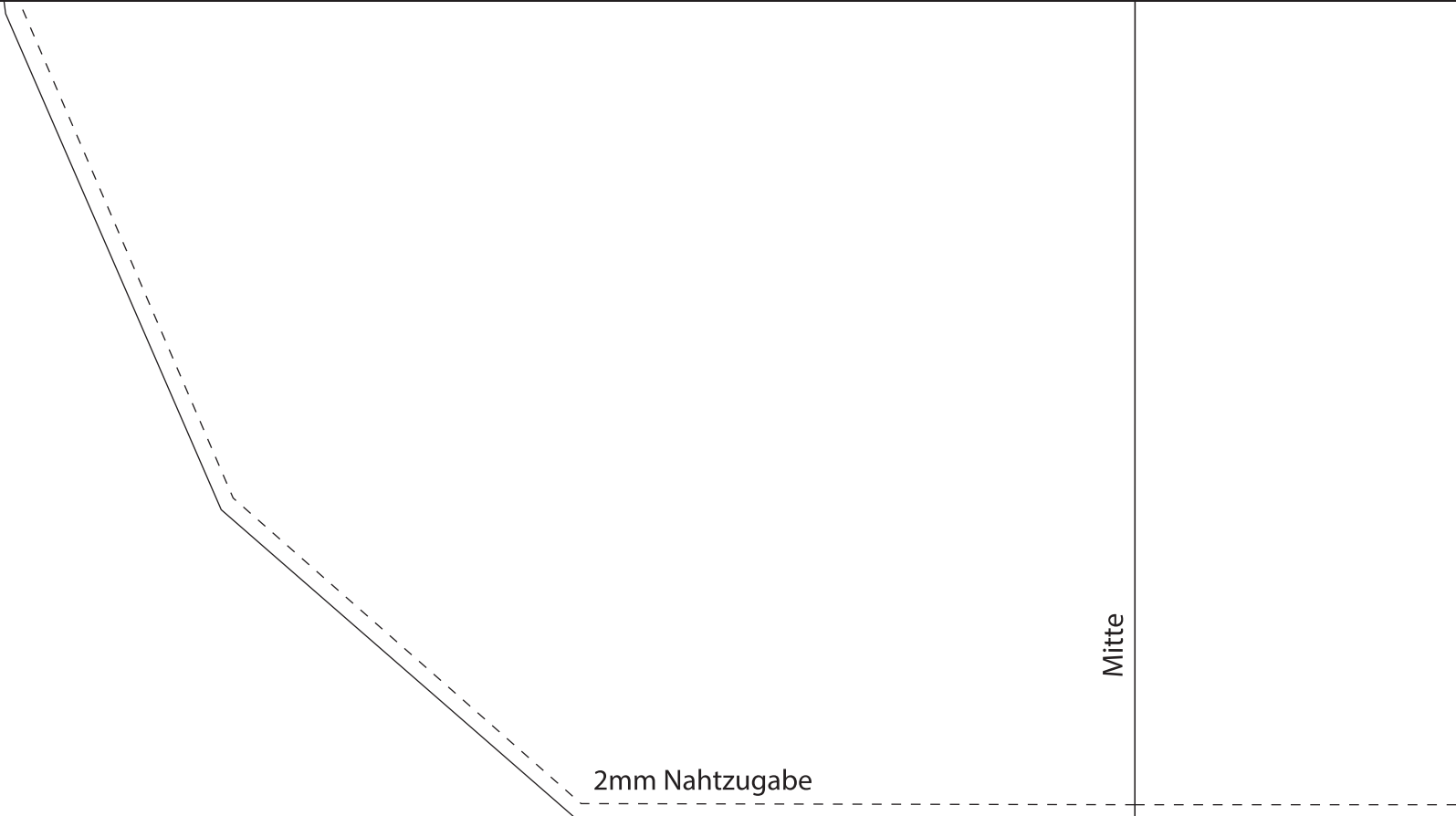


A1

B2

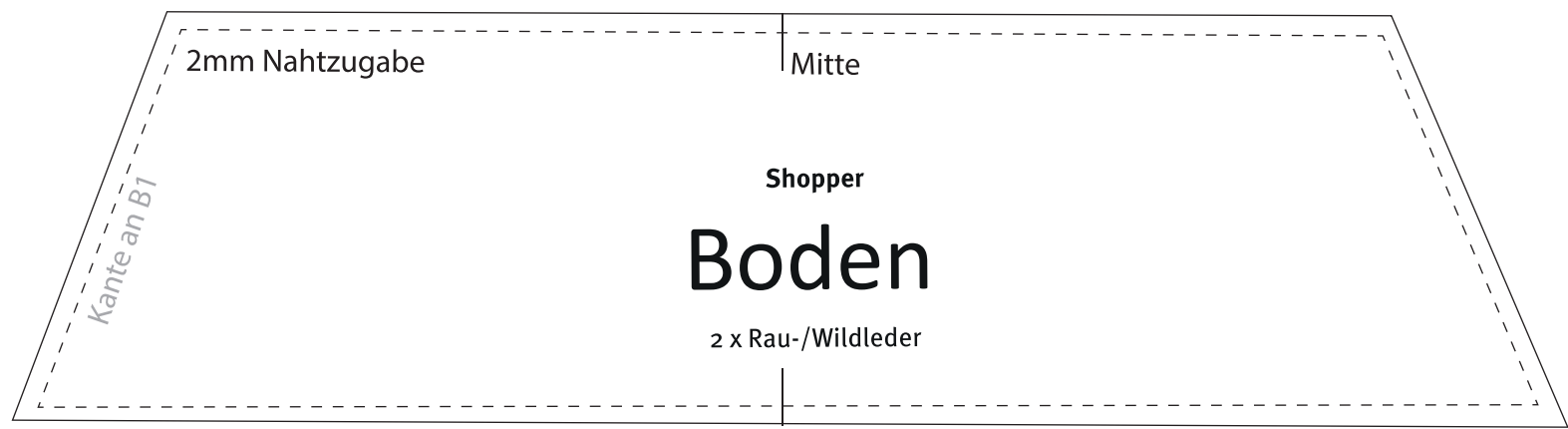
B4

B3



Mitte

2mm Nahtzugabe



2mm Nahtzugabe

Mitte

Shopper

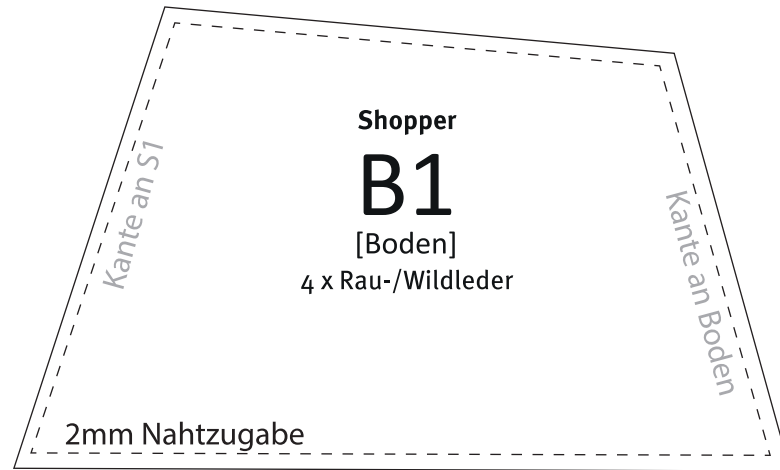
Boden

2 x Rau-/Wildleder

Kante an B1

A2
2A

B4
B4



A2
ZV

