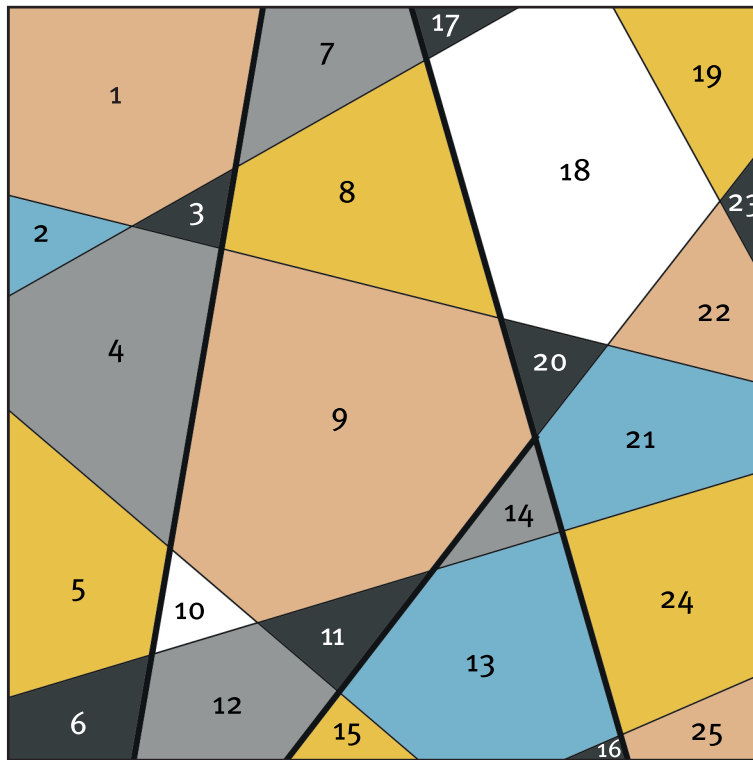
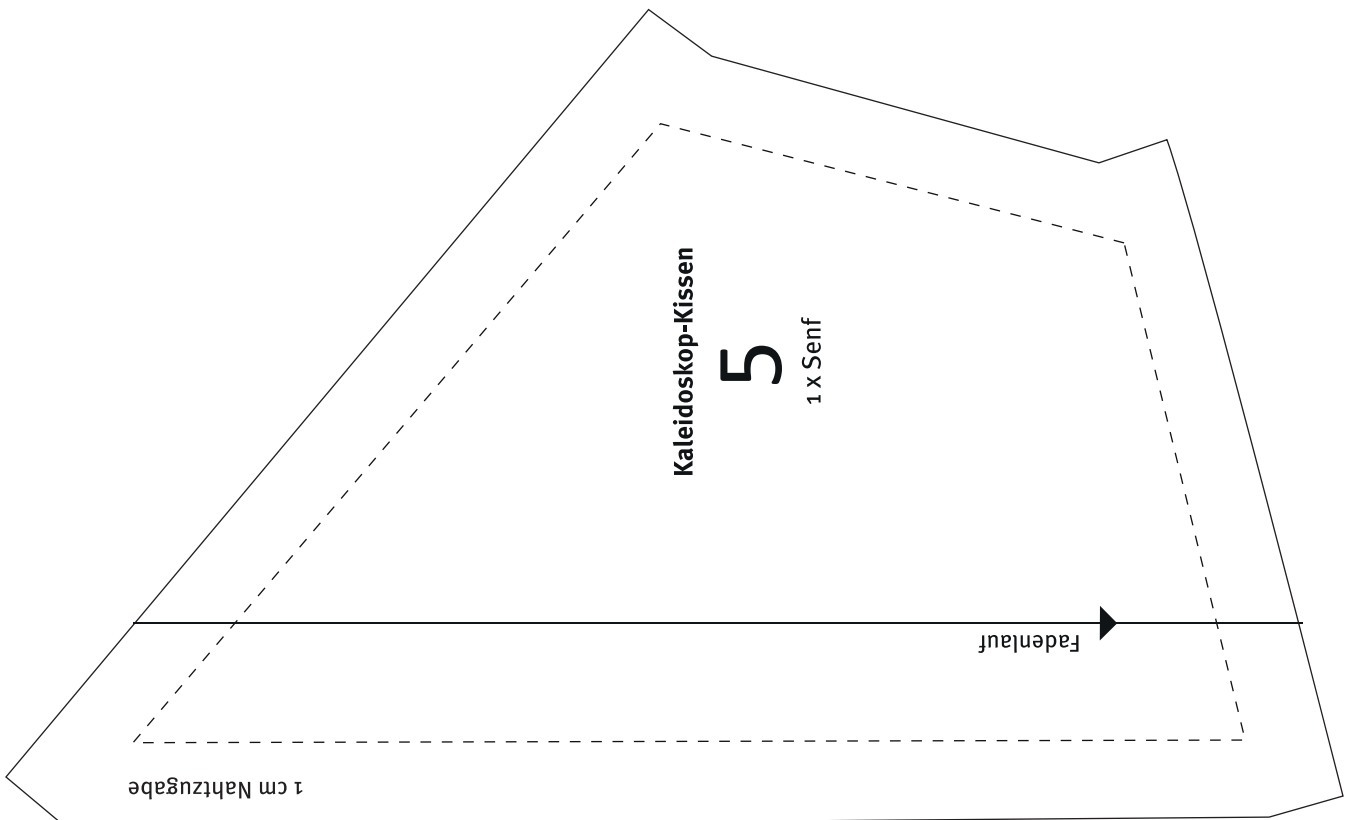
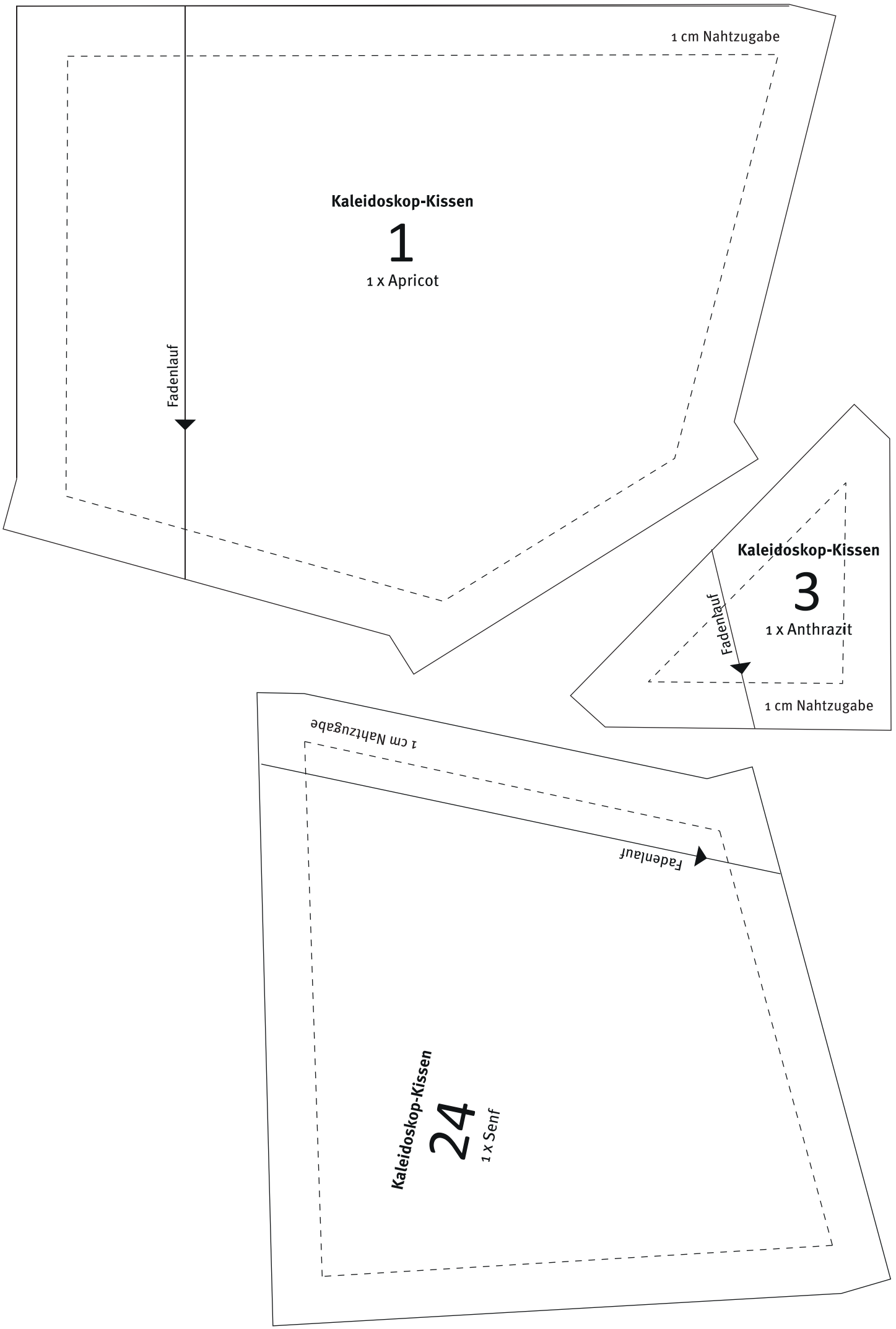


**Anordnung Schnittteile**



**Zuschnitt**





**Kaleidoskop-Kissen**

**1**

1 x Apricot

Fadenlauf

1 cm Nahtzugabe

**Kaleidoskop-Kissen**

**3**

1 x Anthrazit

Fadenlauf

1 cm Nahtzugabe

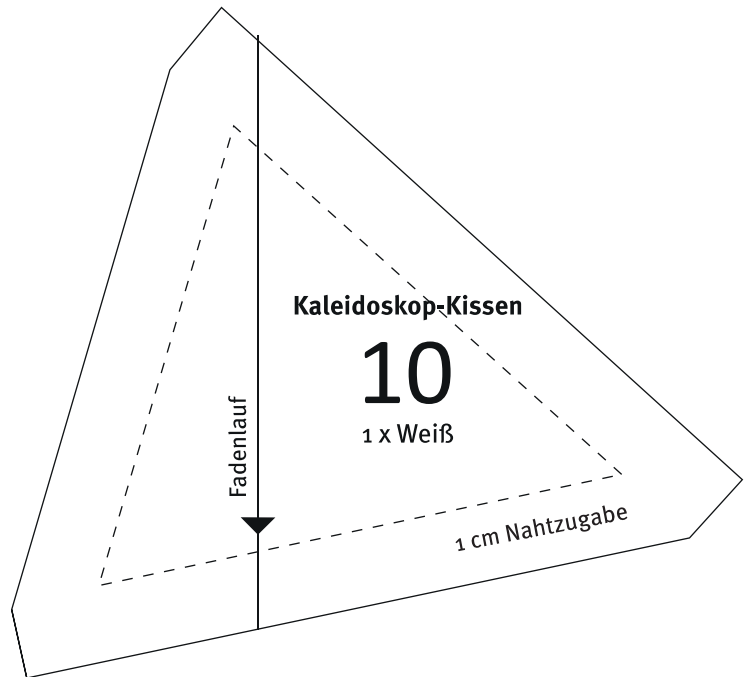
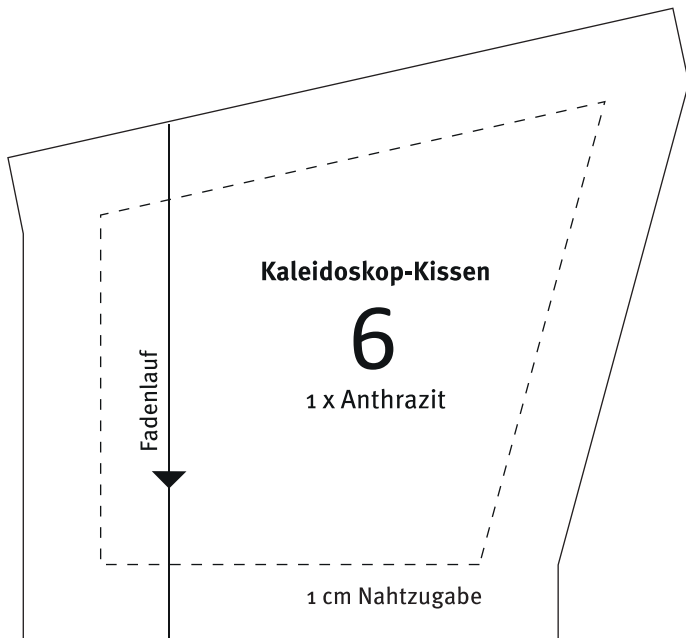
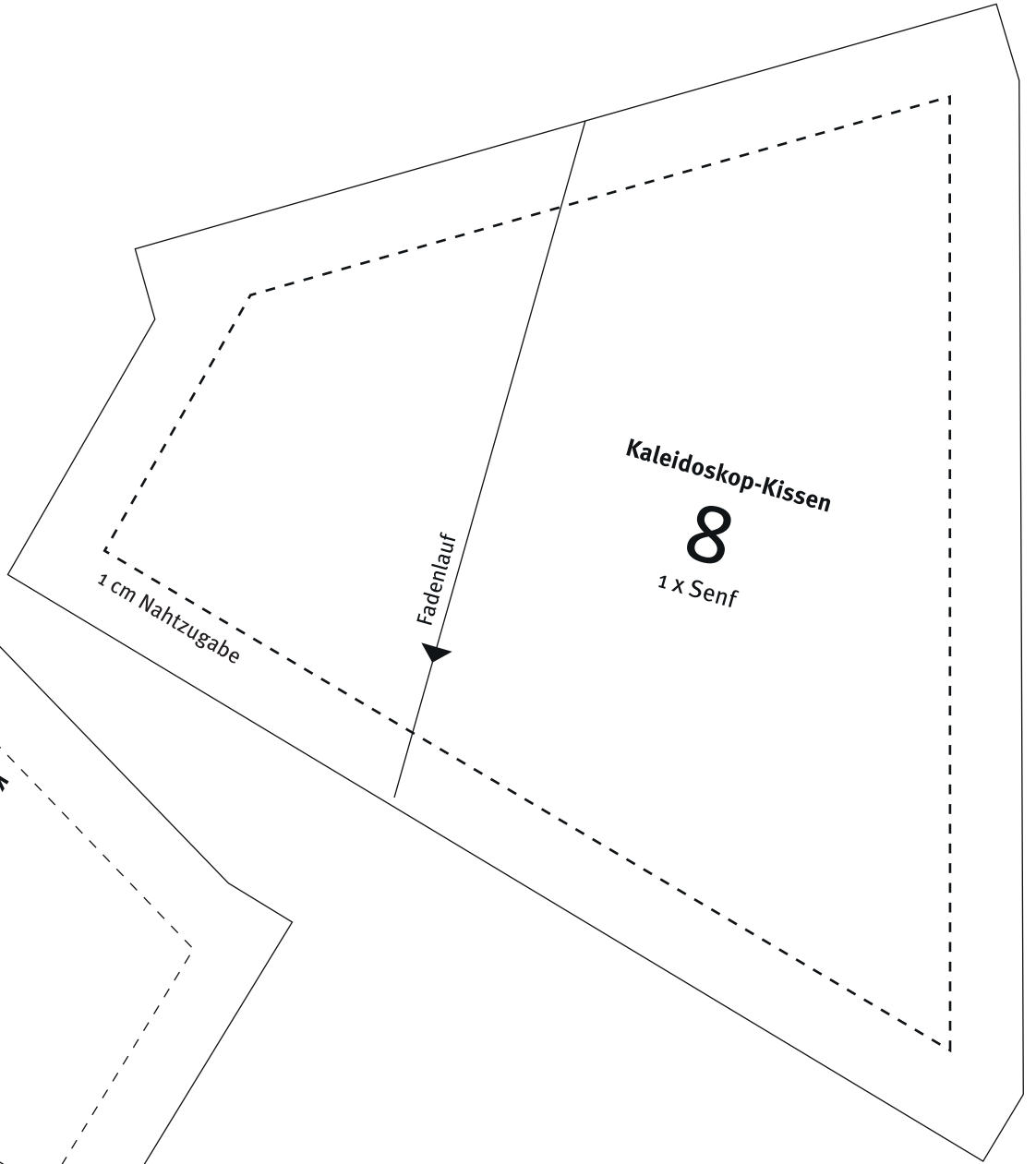
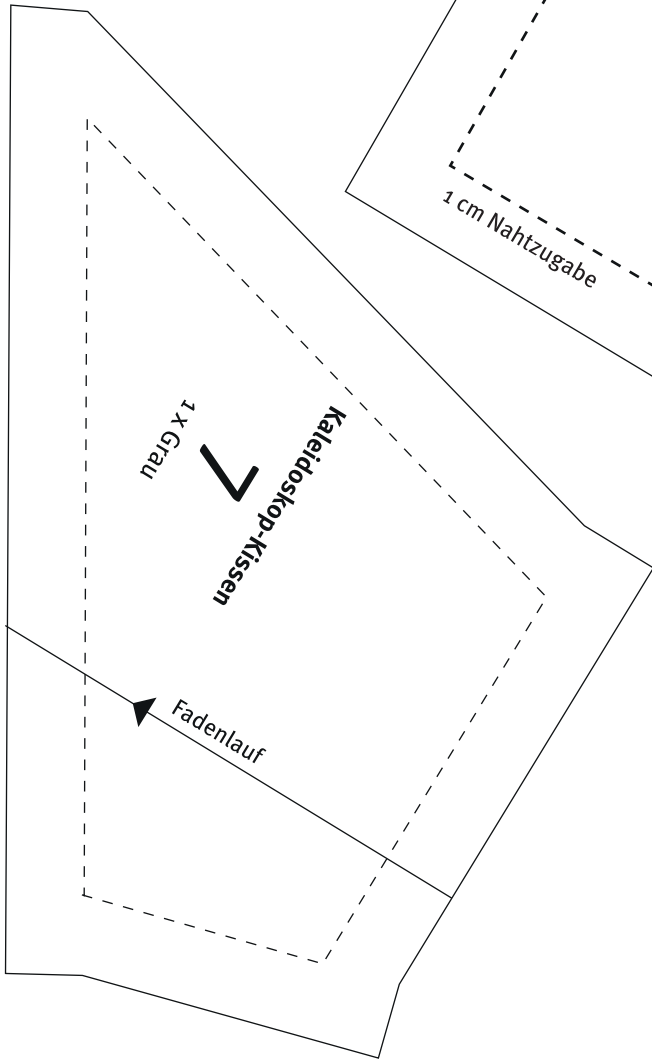
1 cm Nahtzugabe

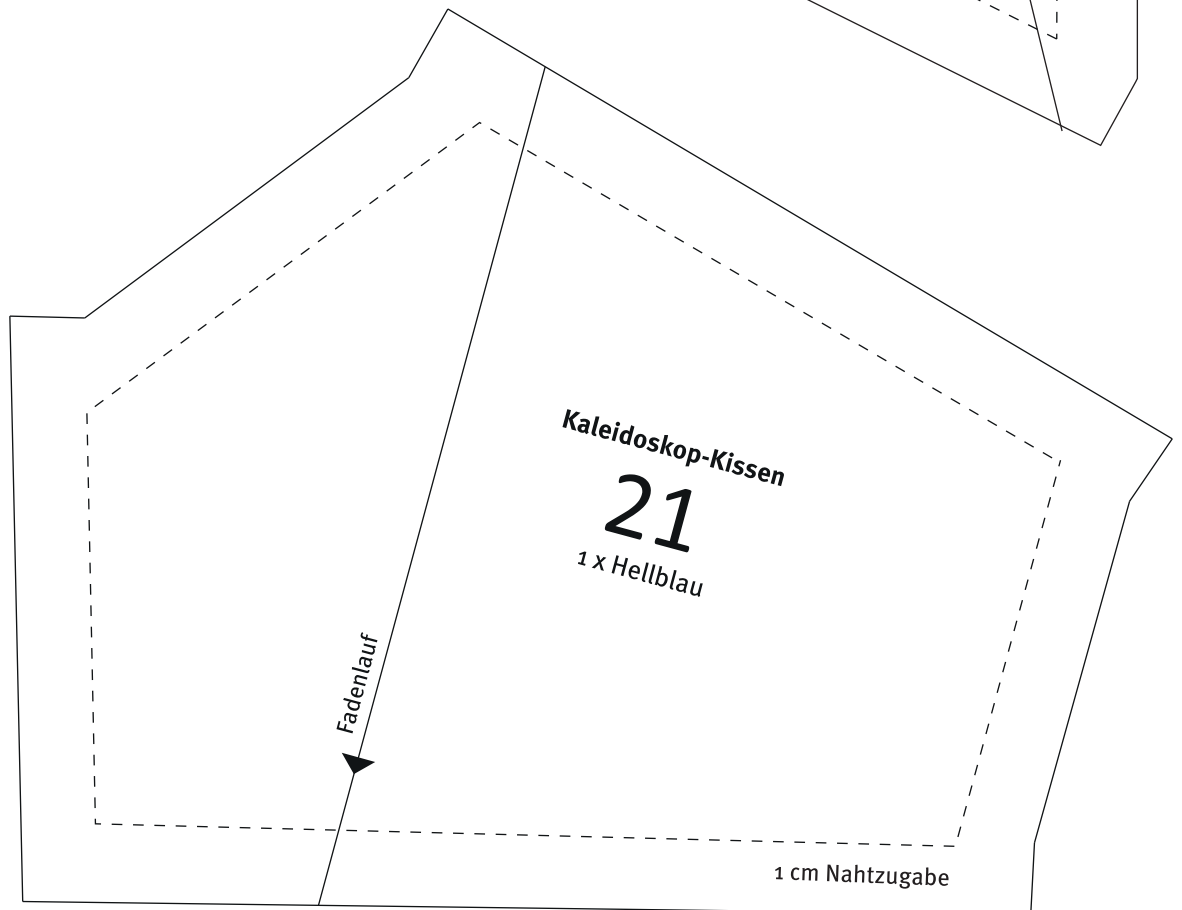
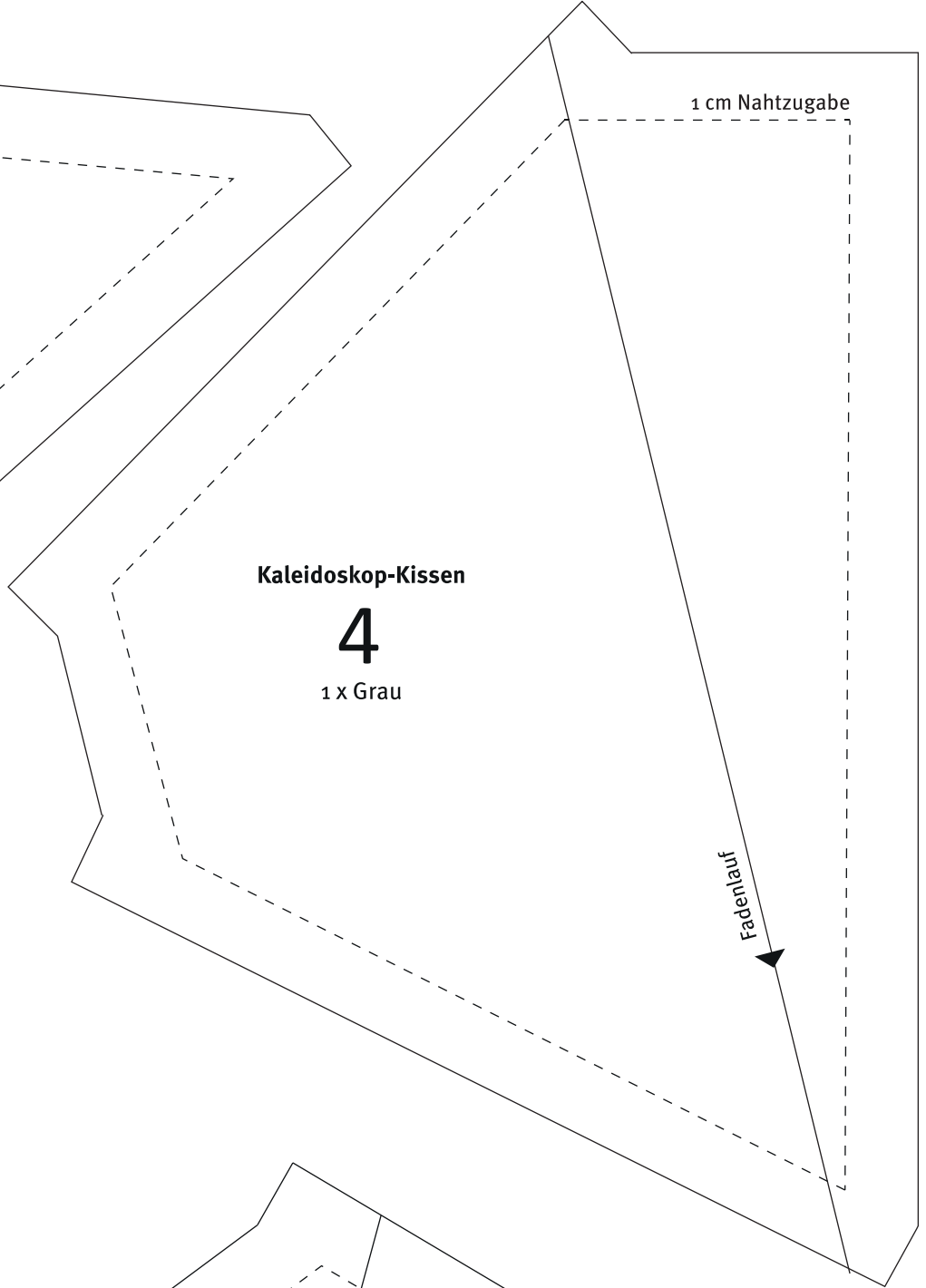
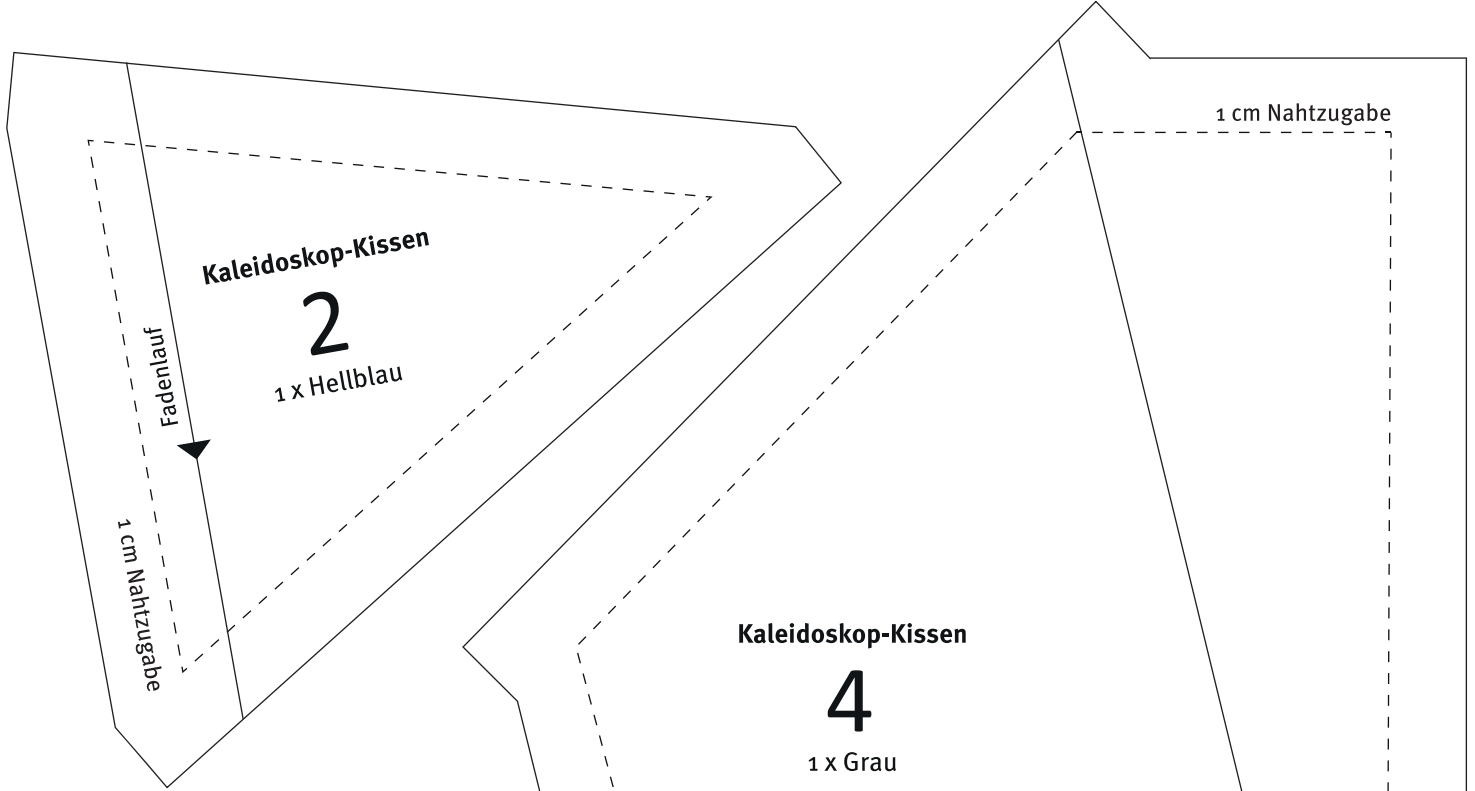
Fadenlauf

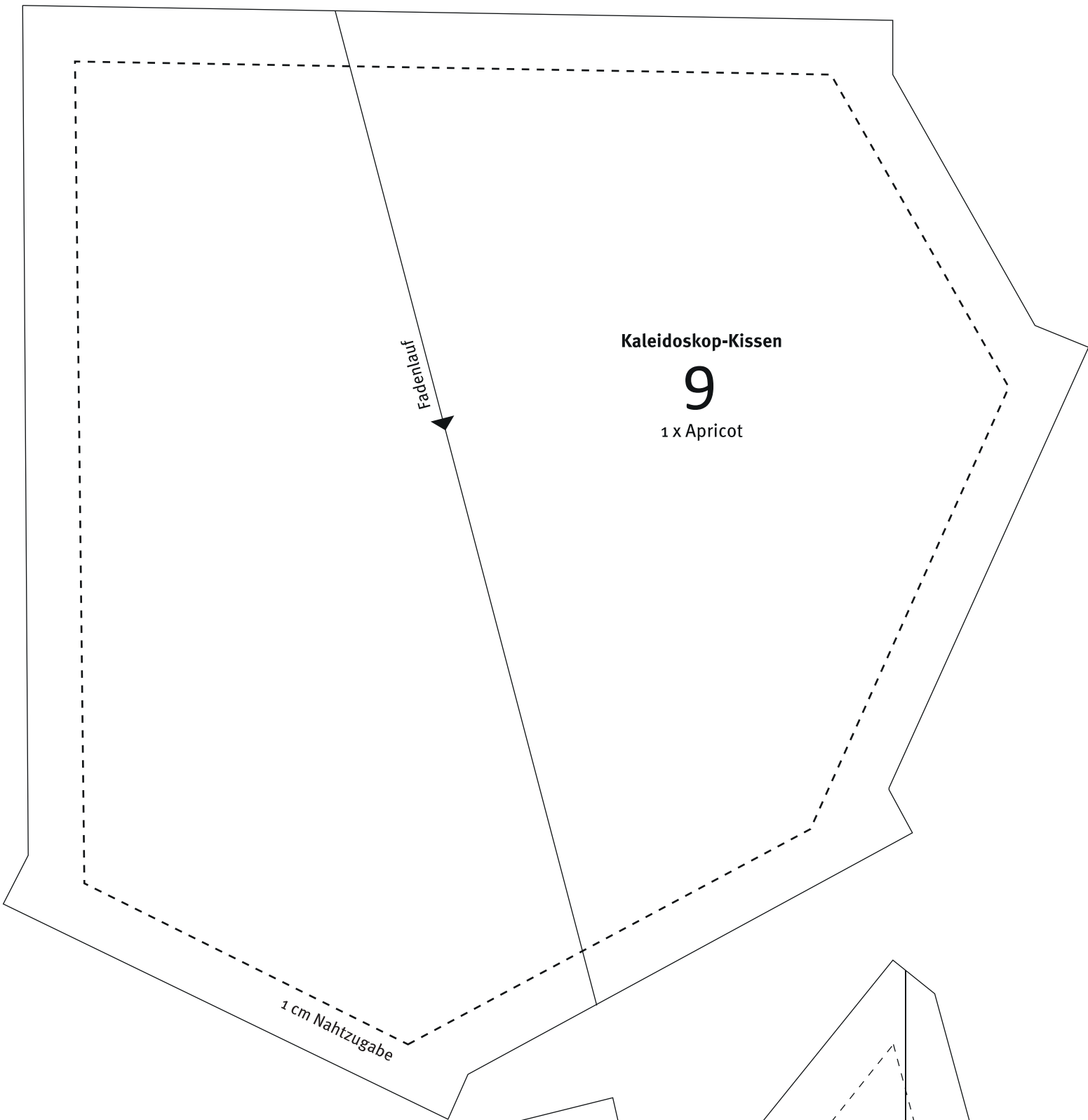
**Kaleidoskop-Kissen**

**24**

1 x Senf





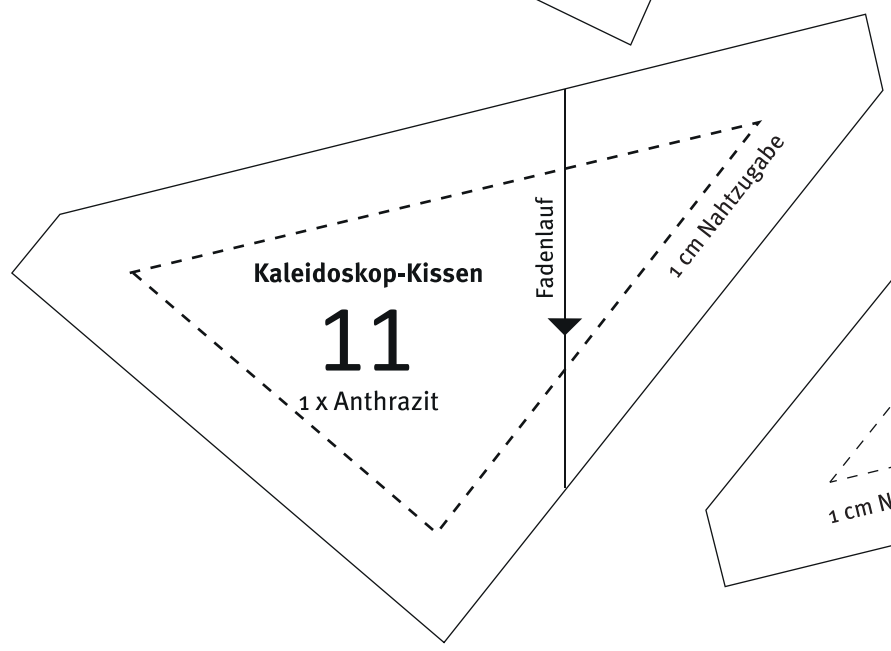


**Kaleidoskop-Kissen**

**9**

1 x Apricot

1 cm Nahtzugabe



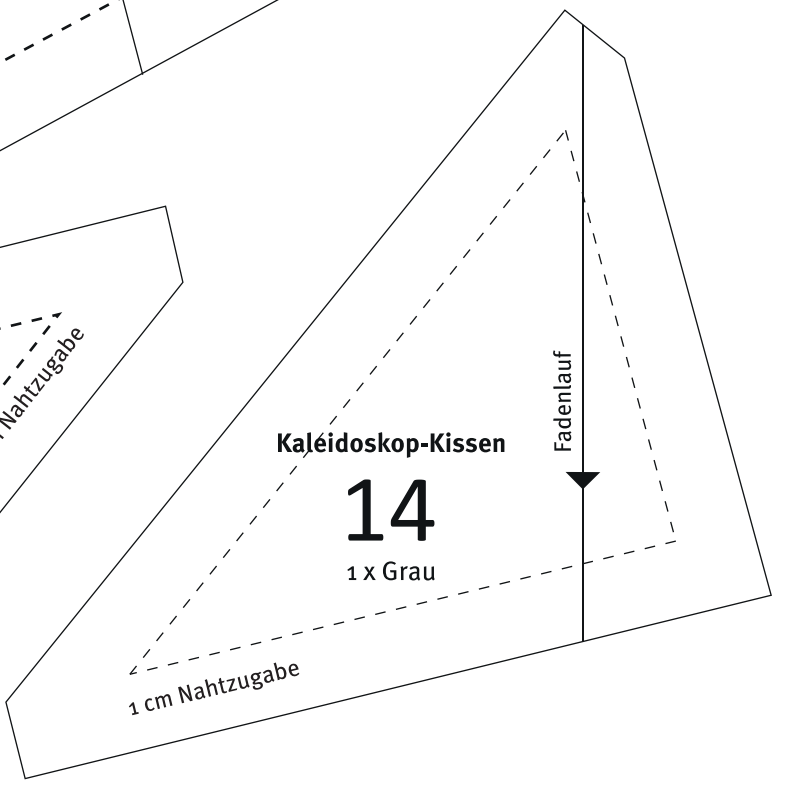
**Kaleidoskop-Kissen**

**11**

1 x Anthrazit

Fadenlauf

1 cm Nahtzugabe



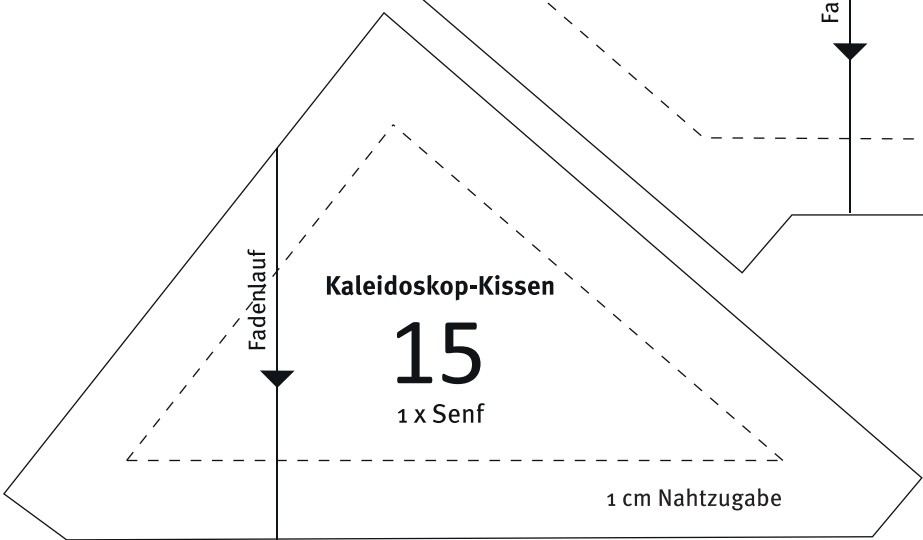
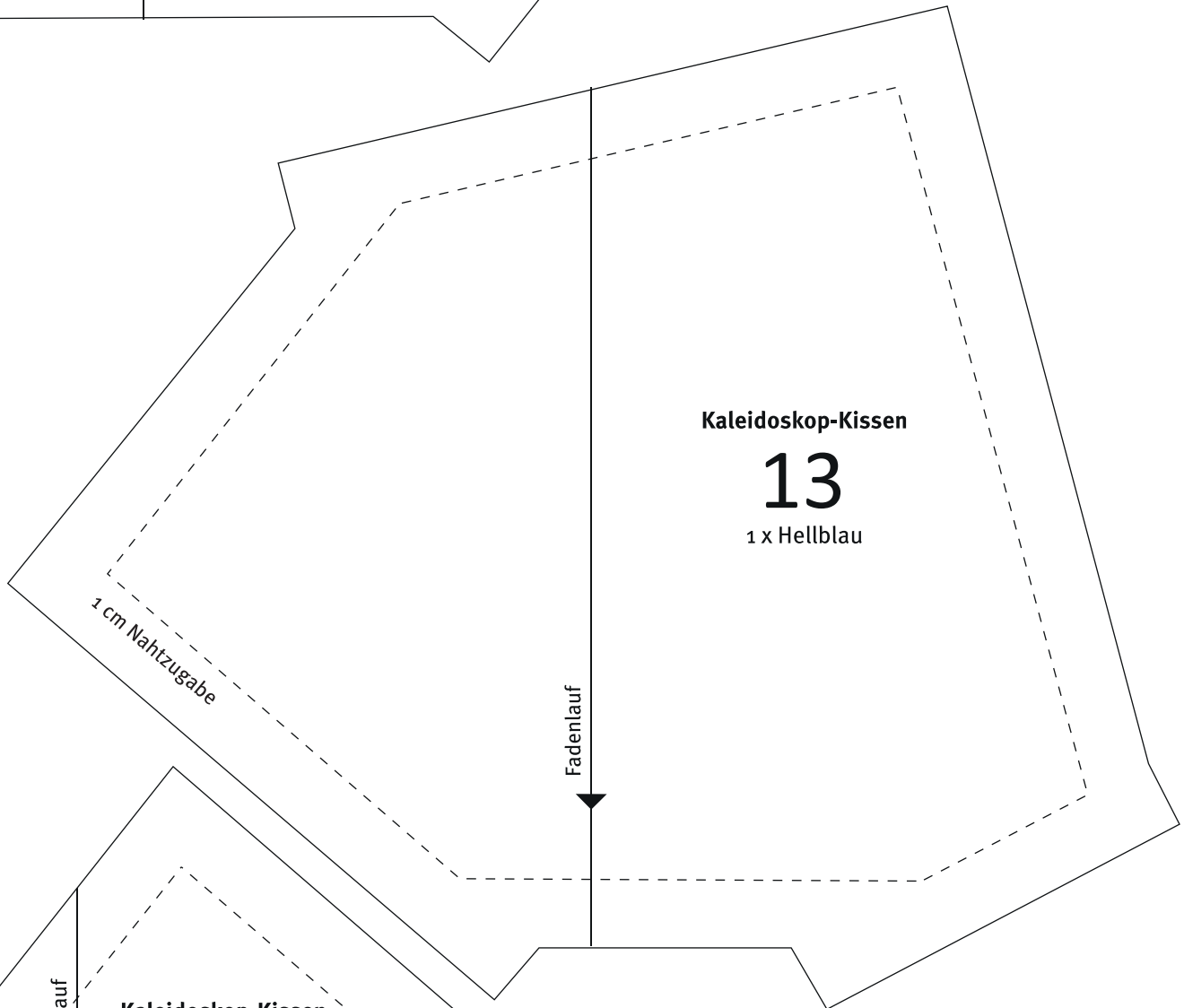
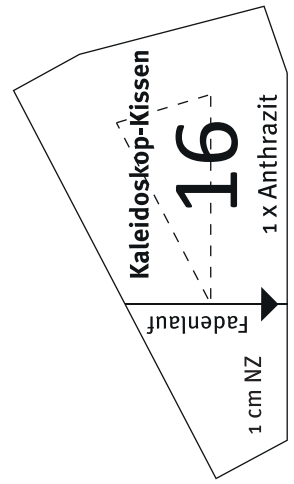
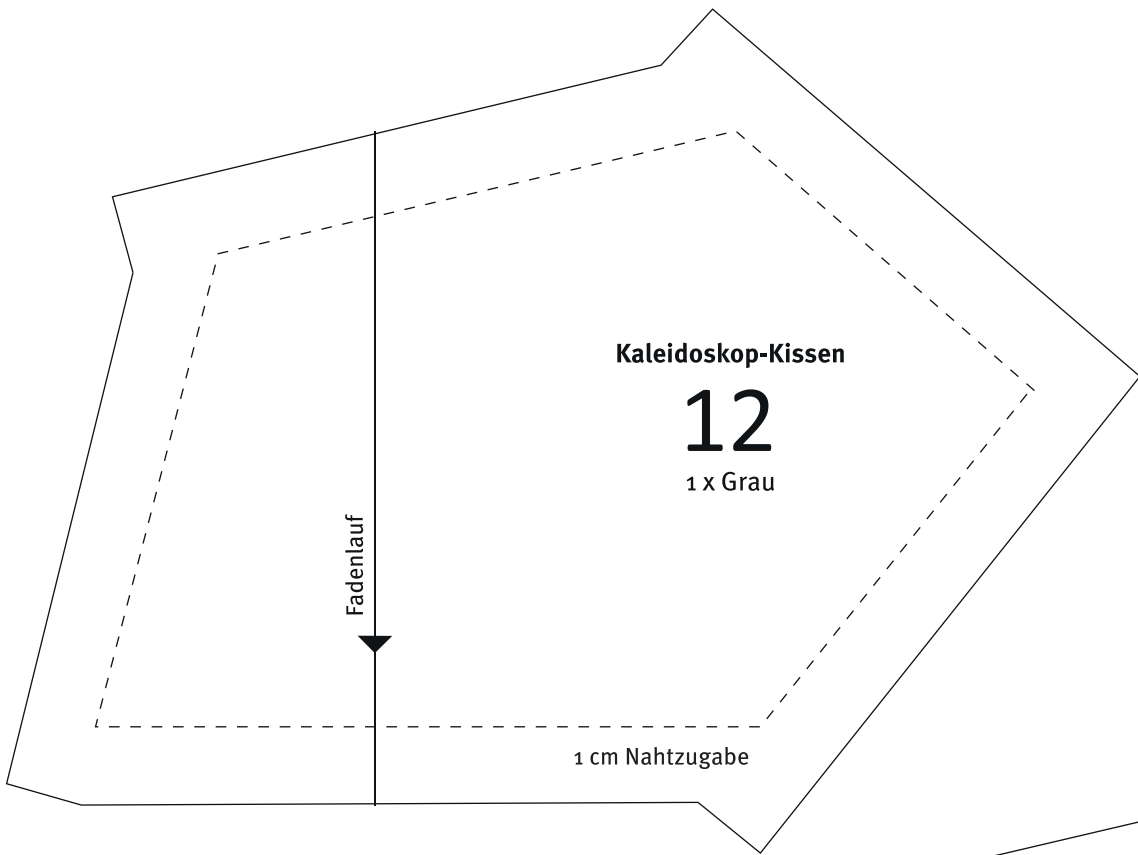
**Kaleidoskop-Kissen**

**14**

1 x Grau

Fadenlauf

1 cm Nahtzugabe



**Kaleidoskop-Kissen**

**17**

1 x Anthrazit

1 cm Nahtzugabe

Fadenlauf

1 cm Nahtzugabe

1 cm Nahtzugabe

**Kaleidoskop-Kissen**

**19**

1 x Senf

Fadenlauf

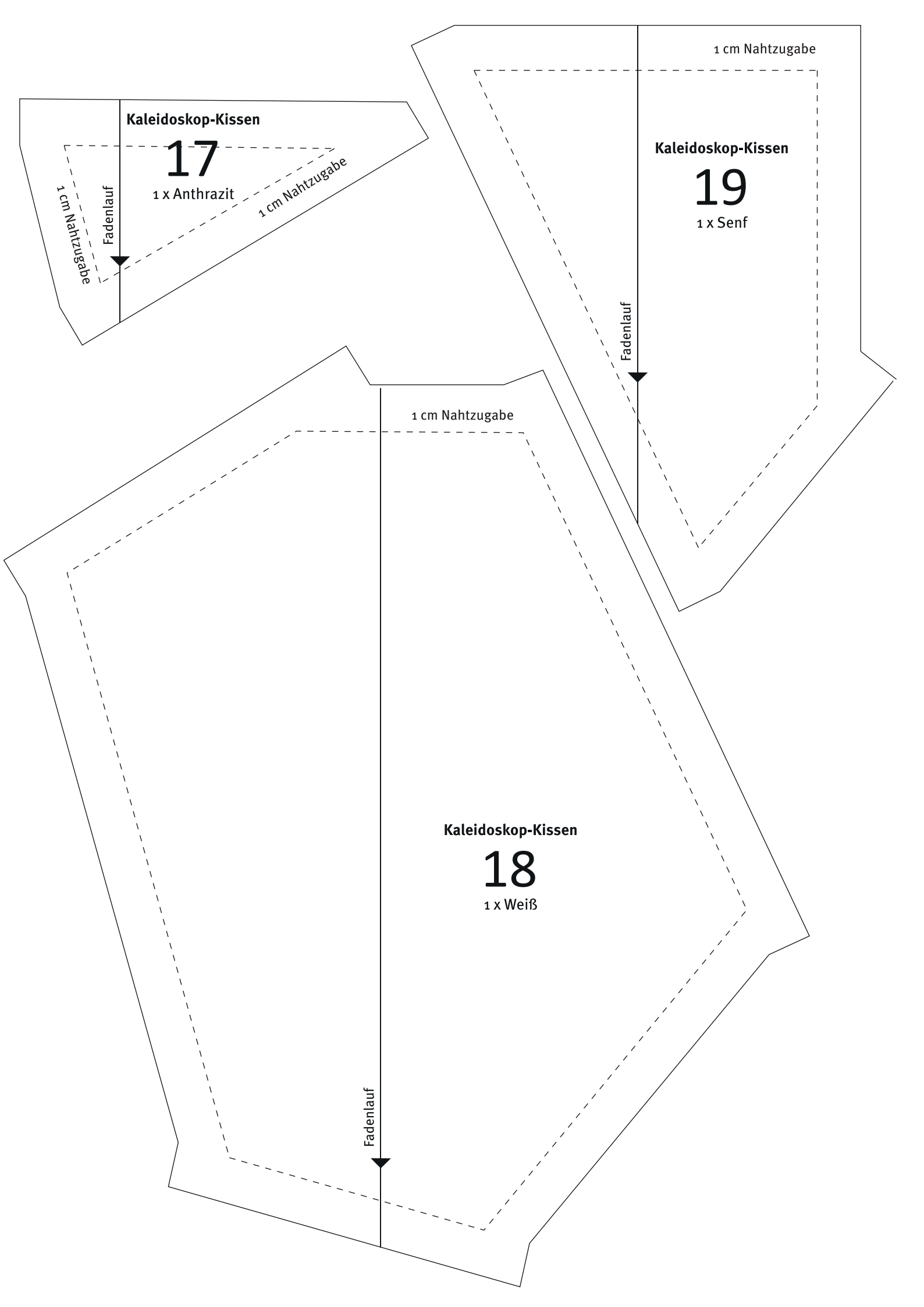
1 cm Nahtzugabe

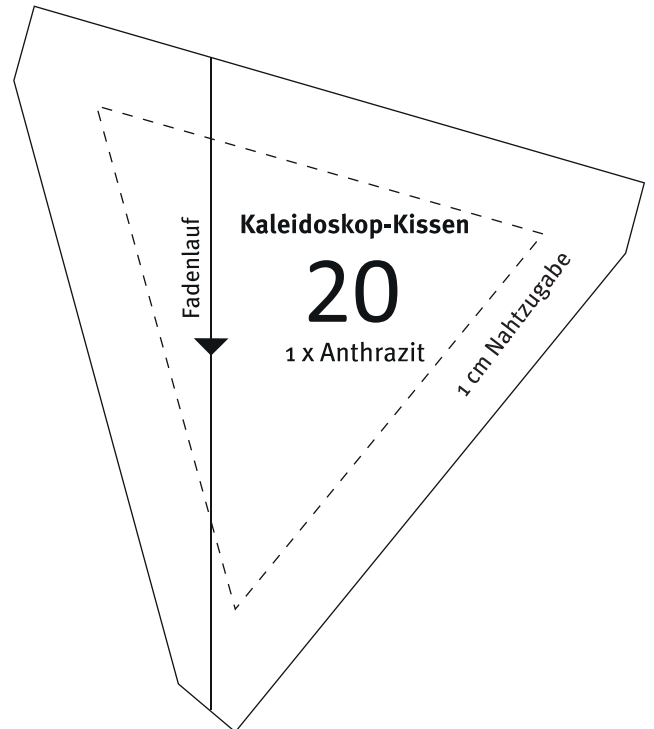
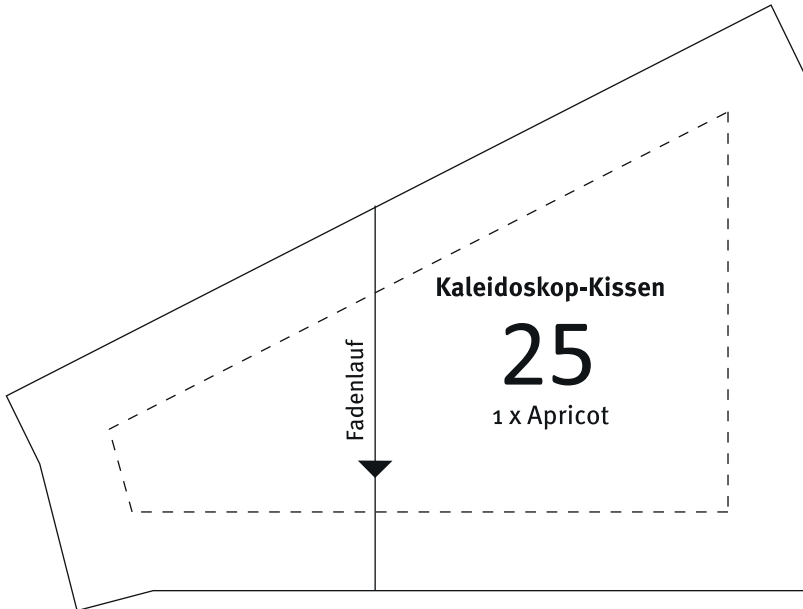
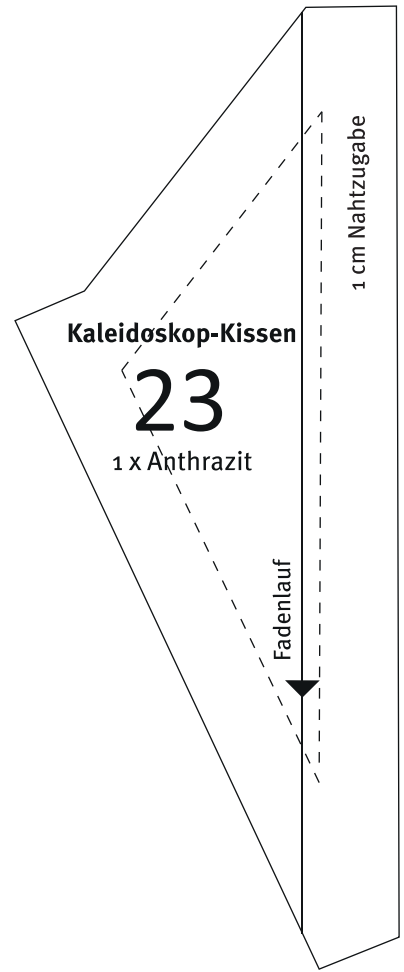
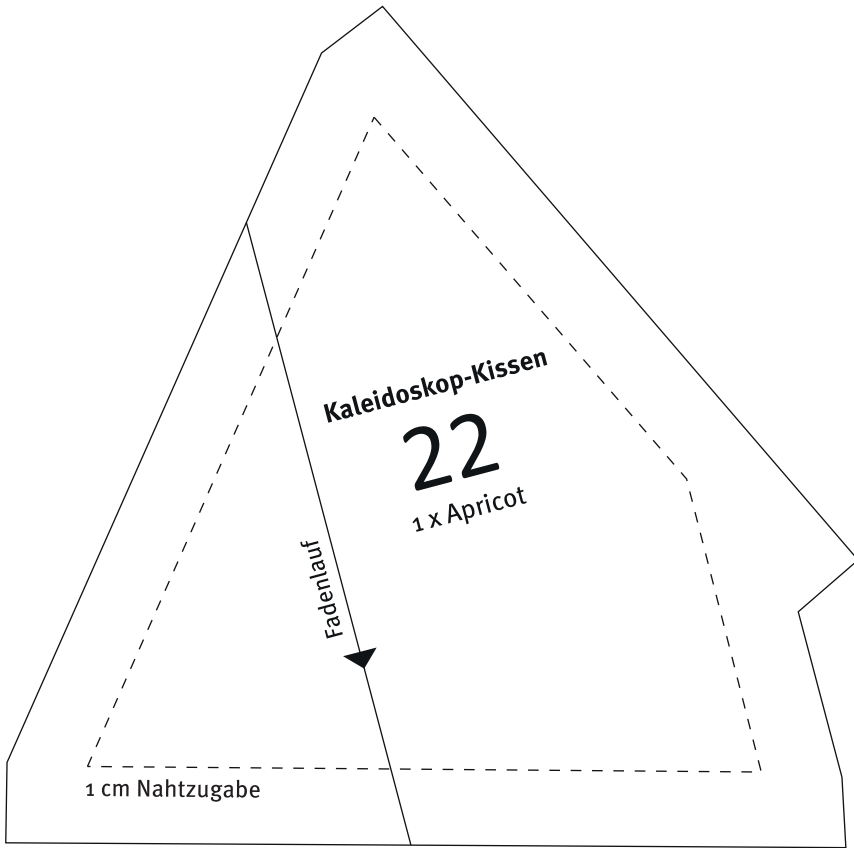
**Kaleidoskop-Kissen**

**18**

1 x Weiß

Fadenlauf







## Schnittangaben

Schnittmuster mit angegebenen Maßen erstellen  
oder Maße direkt auf den Stoff übertragen.

