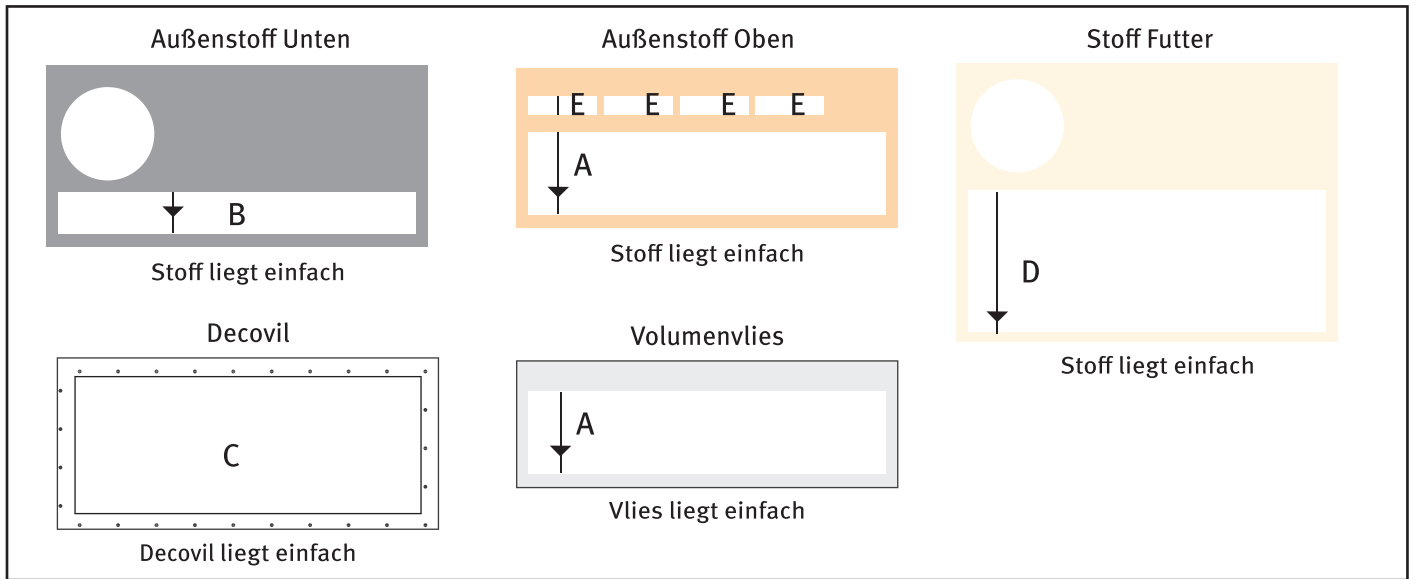
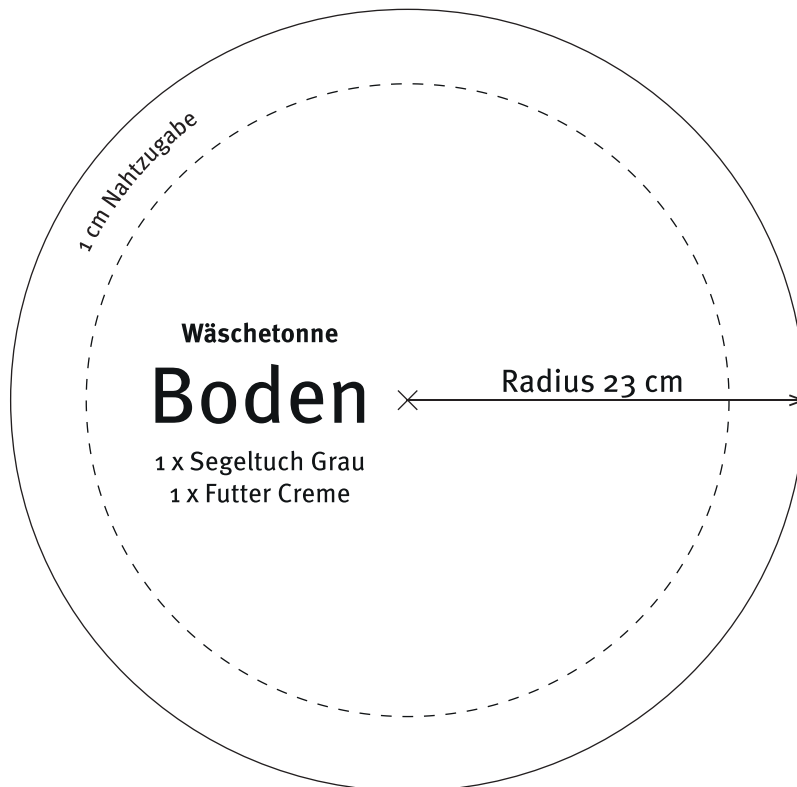


Zuschneideplan



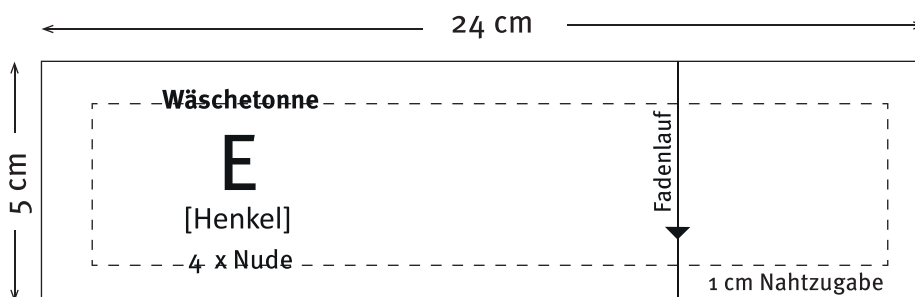
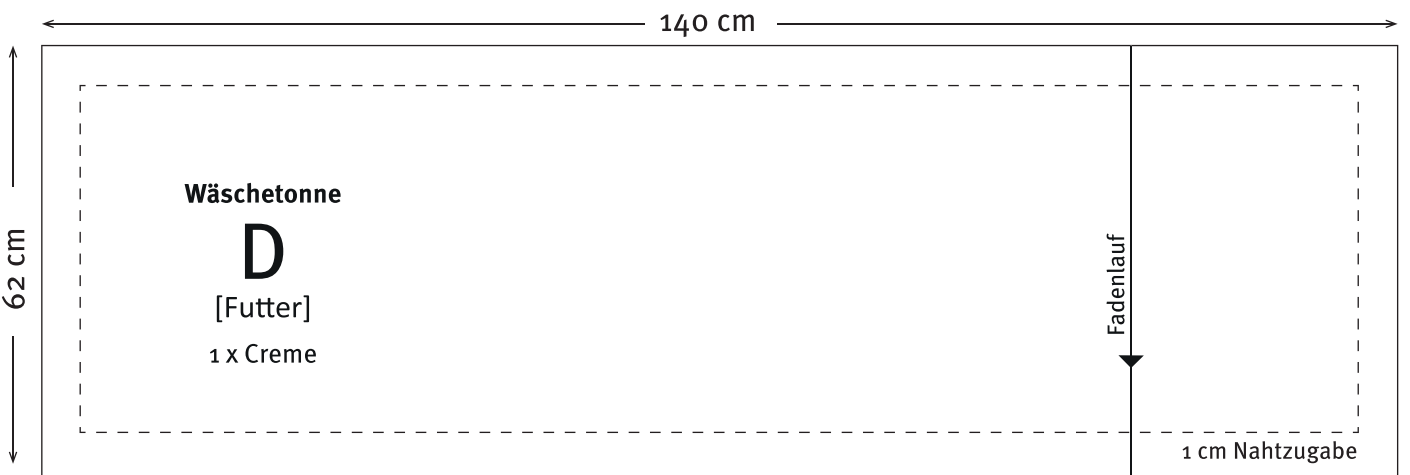
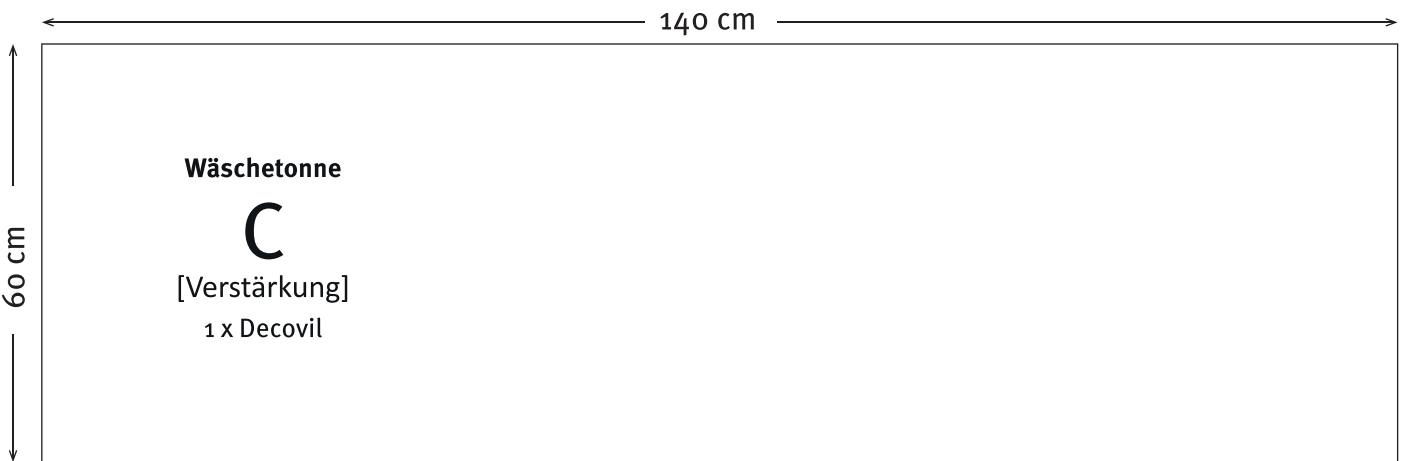
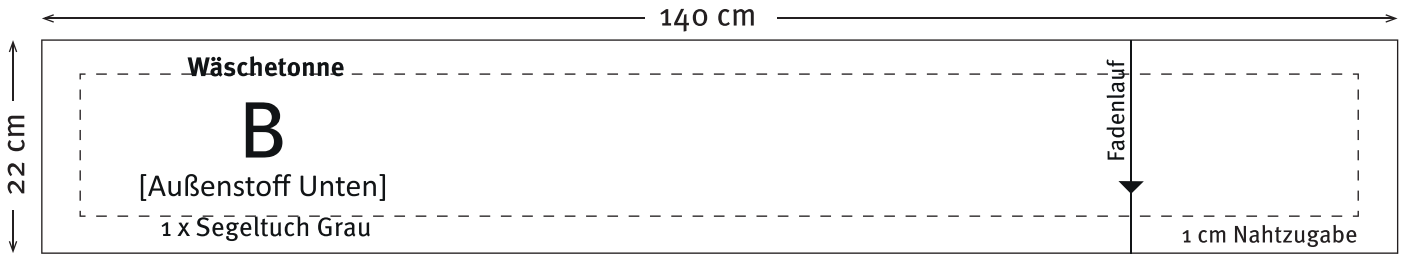
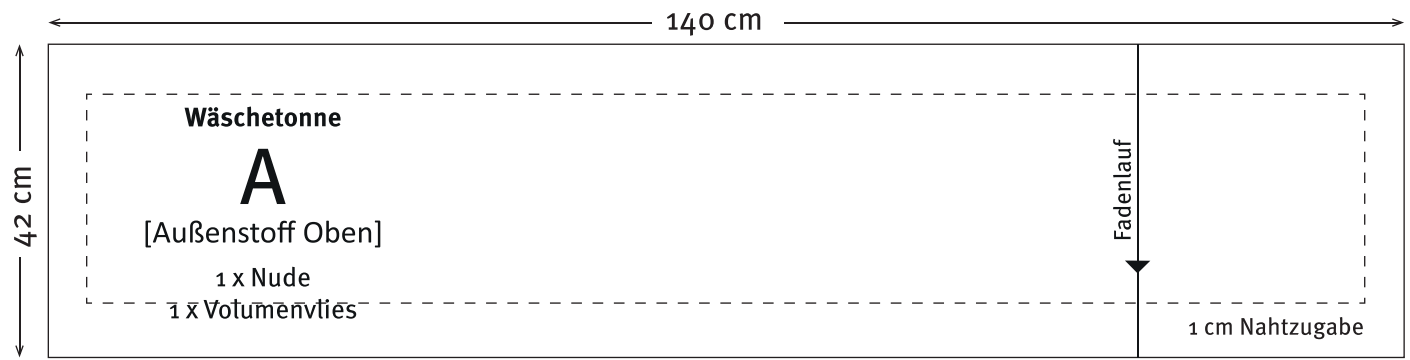
Schnittangaben

Schnittmuster mit angegebenen Maßen erstellen oder Maße direkt auf den Stoff übertragen.



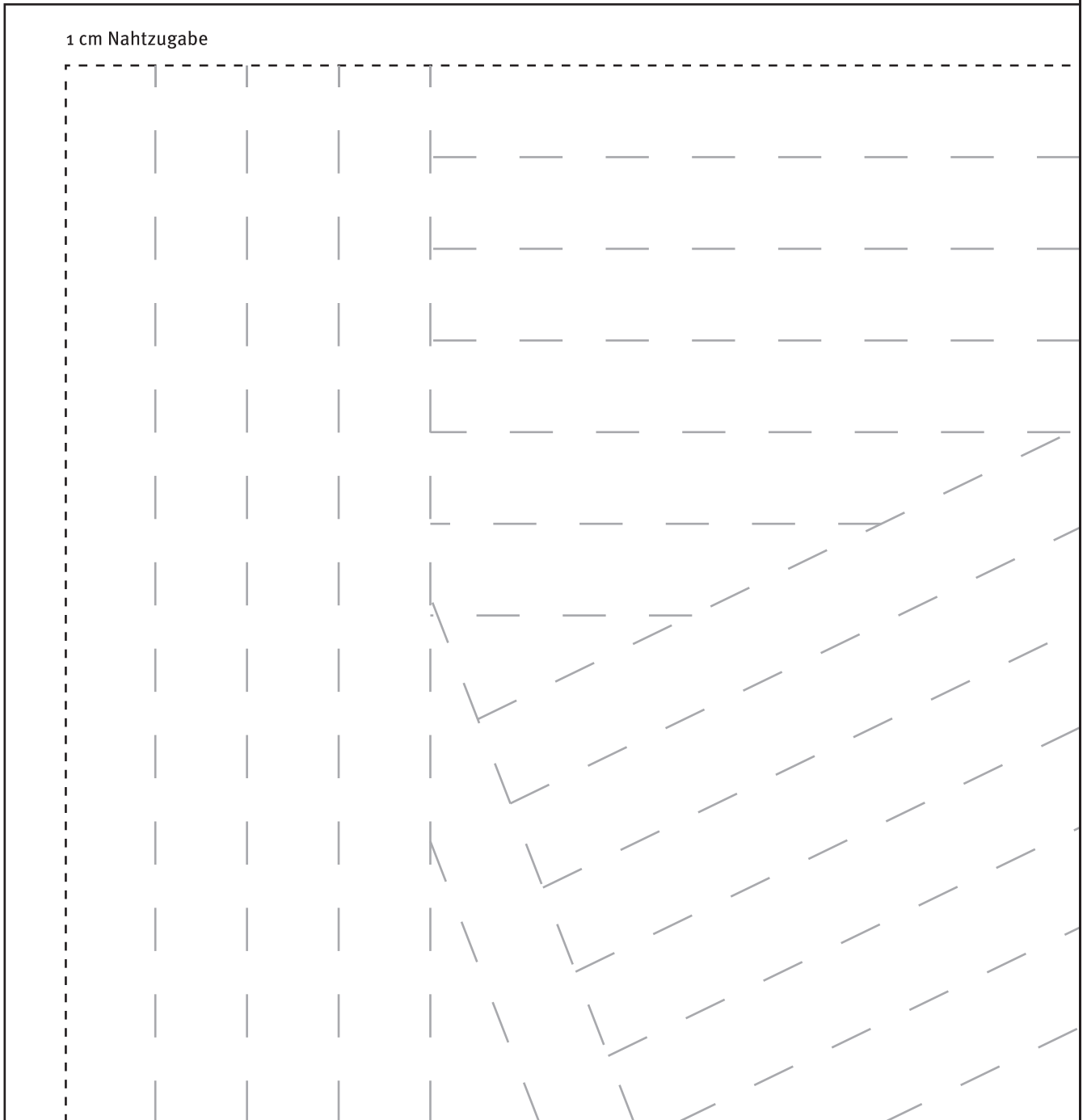
Rundes Schnittteil übertragen:

Die runden Teile können Sie mit einem **Zirkel** auf den Stoff, bzw. auf die Rückseite des Leders zeichnen. Alternativ können Sie ein Stück **Schnur** nehmen, das Sie im Mittelpunkt festhalten und an dessen Außenseite Sie für den Außenkreis einen **Schneiderkreide-Stift** festbinden.



Steppvorlage

1 cm Nahtzugabe





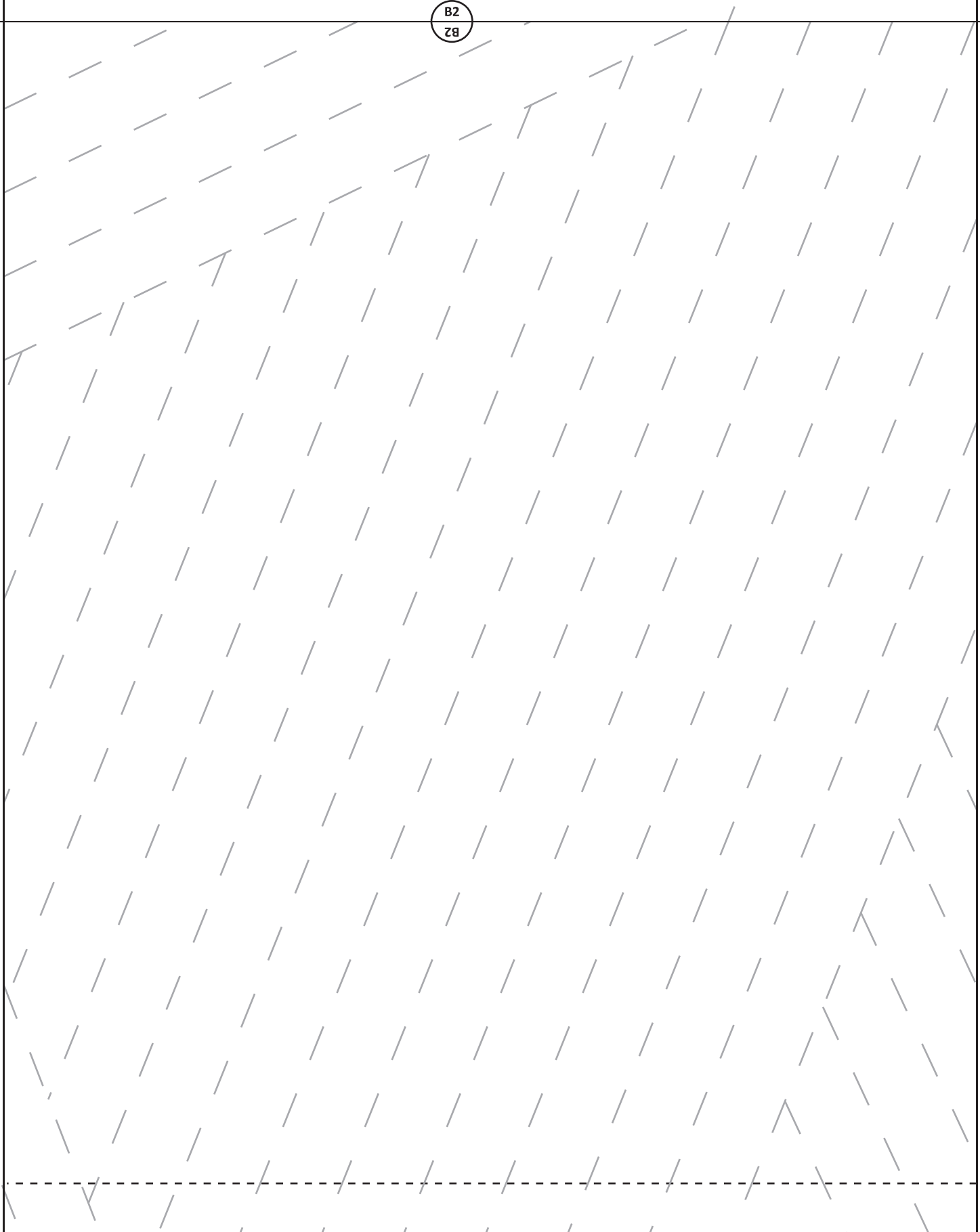
A1
TV

A2
ZV



B2
B2

B2



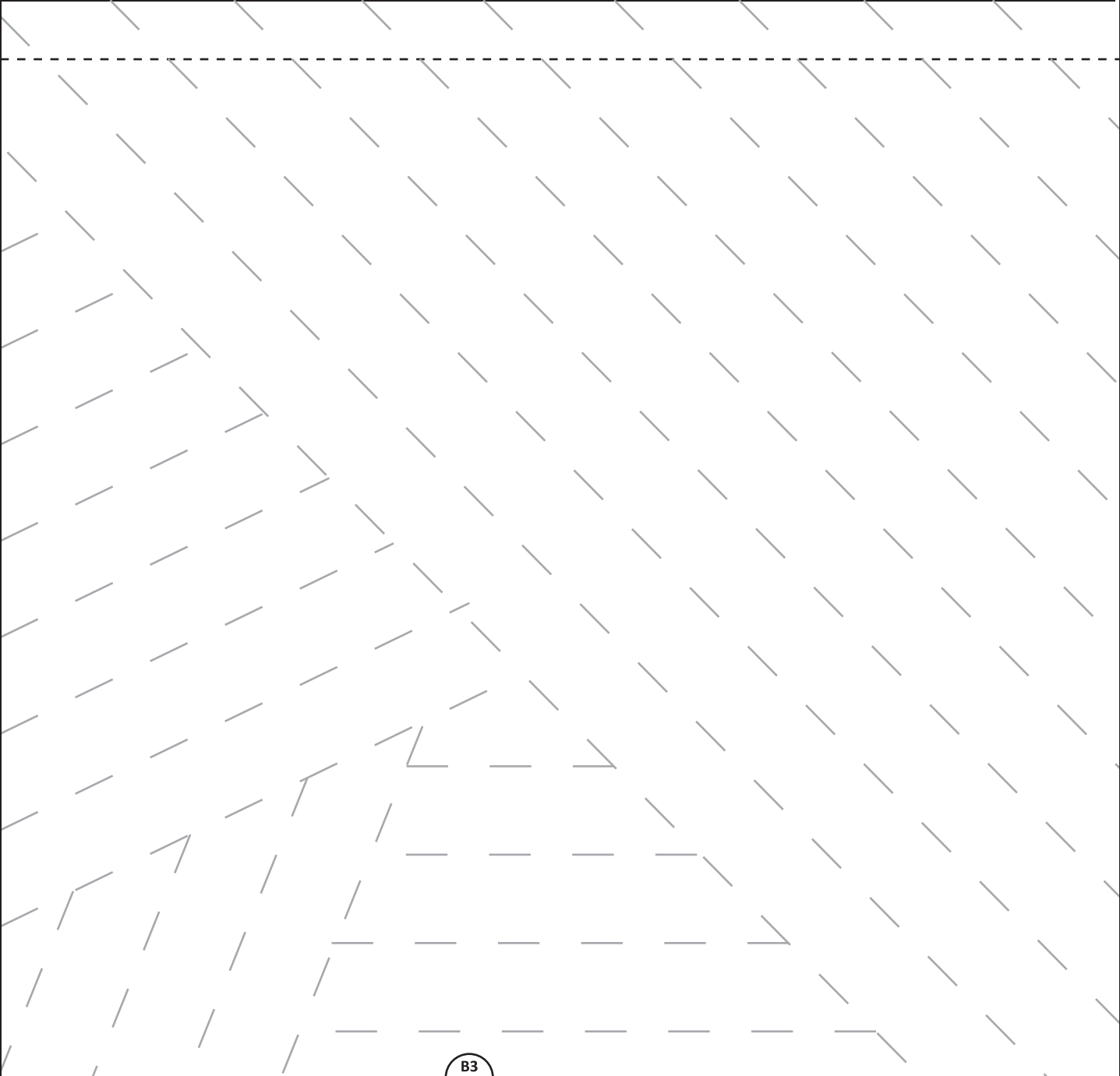
A8
8V

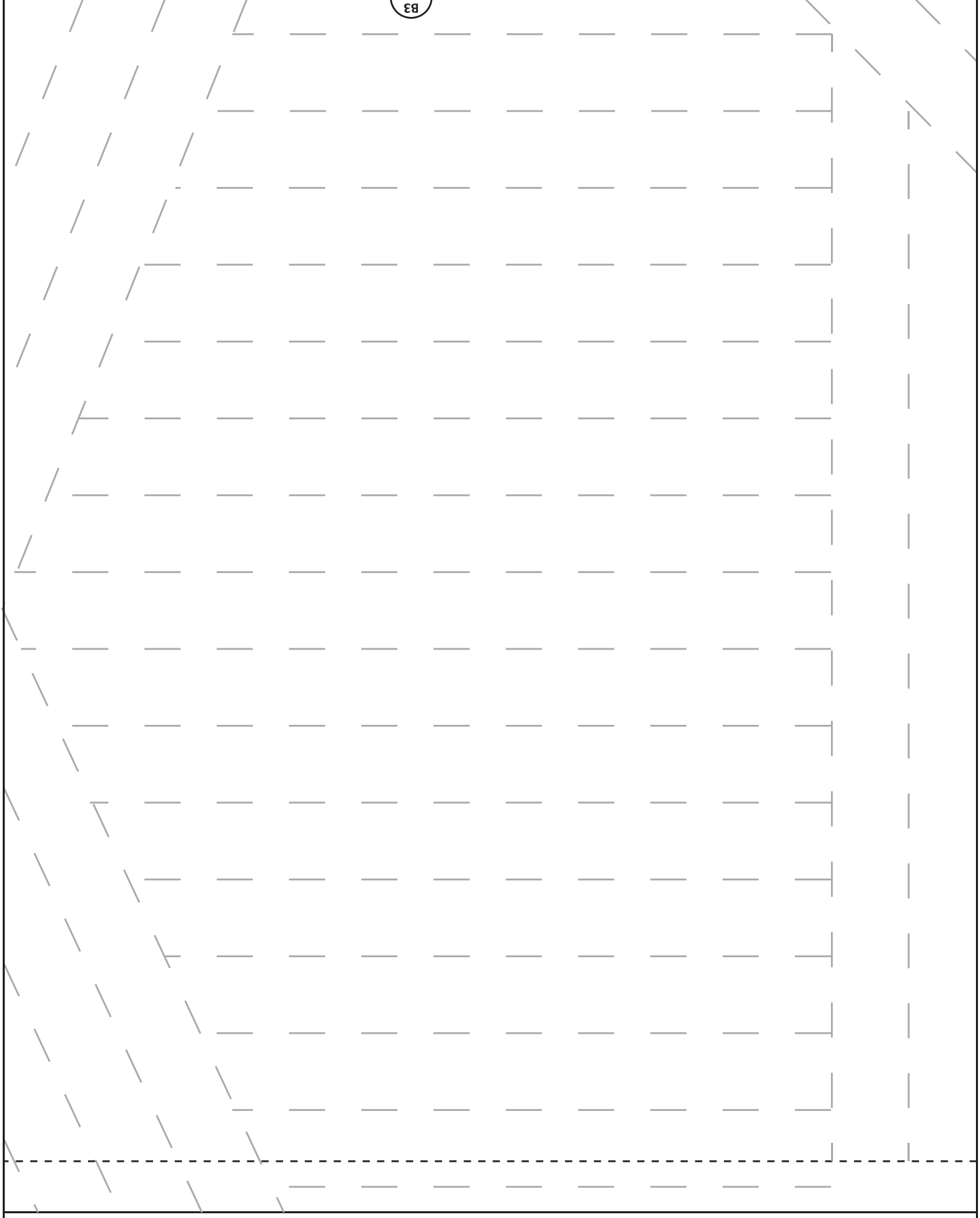
A9
6V

A2
2A

A3
3A

B3
3B

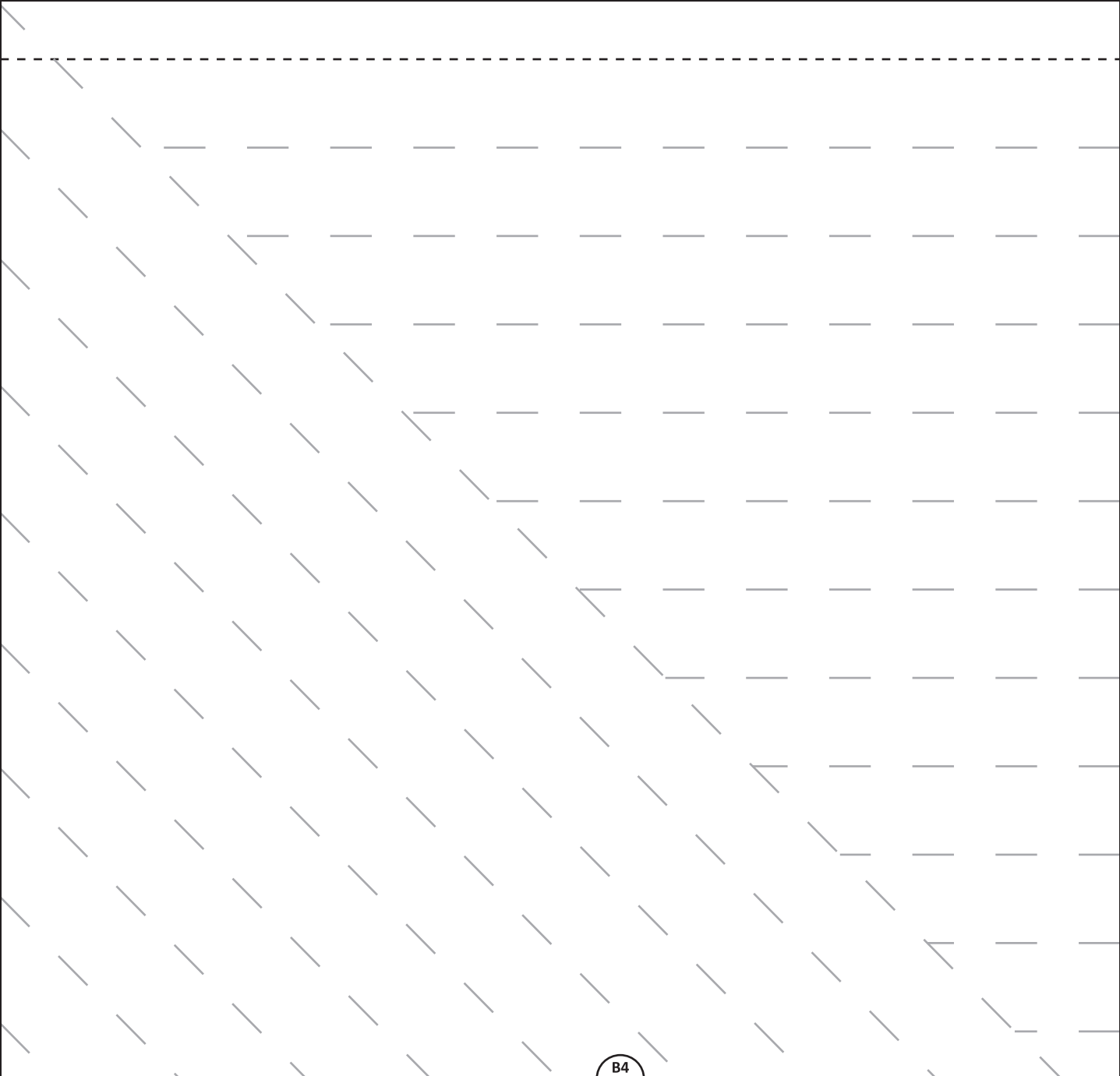




A3
CA

A4
FA

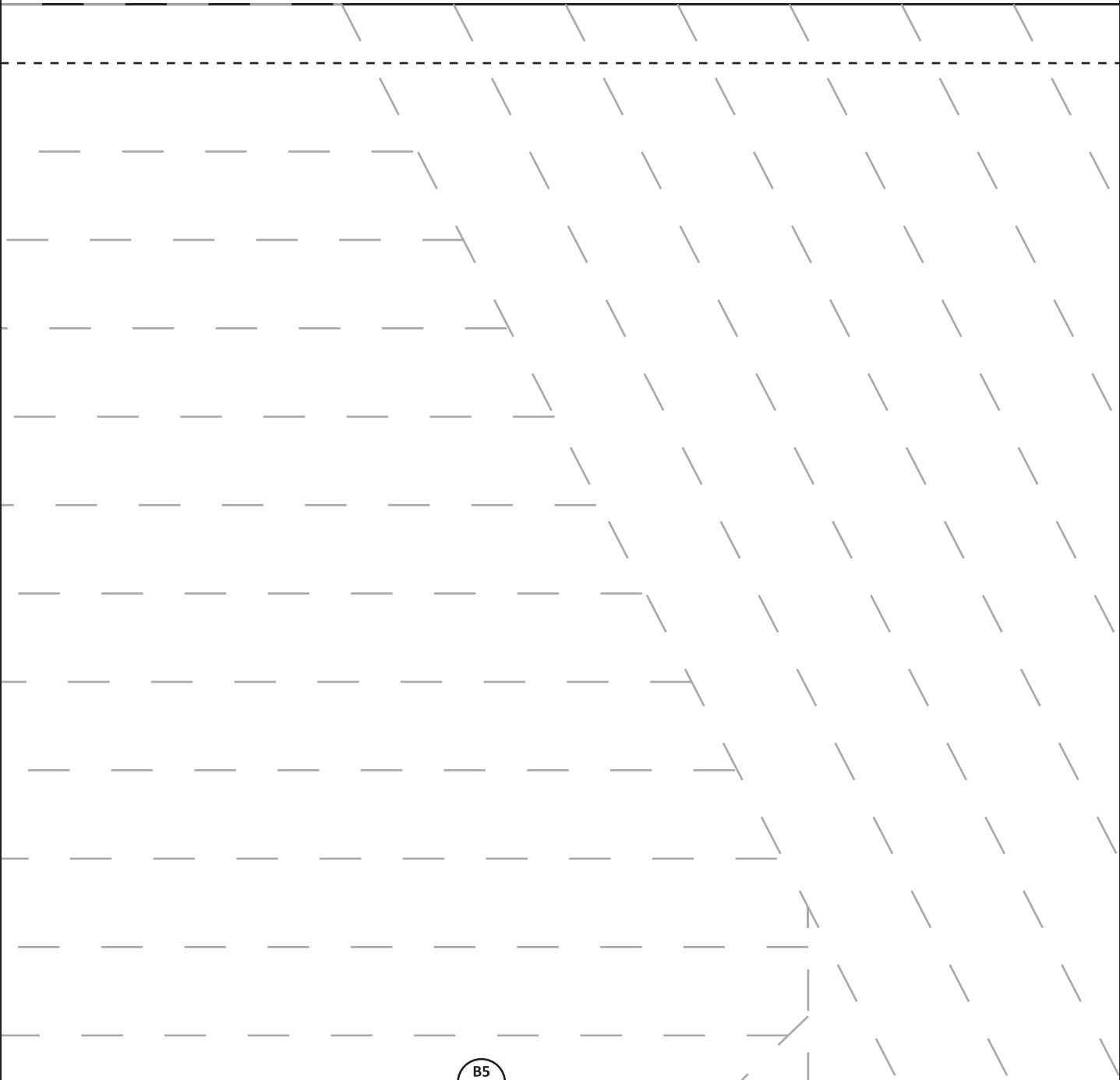
B4
BA



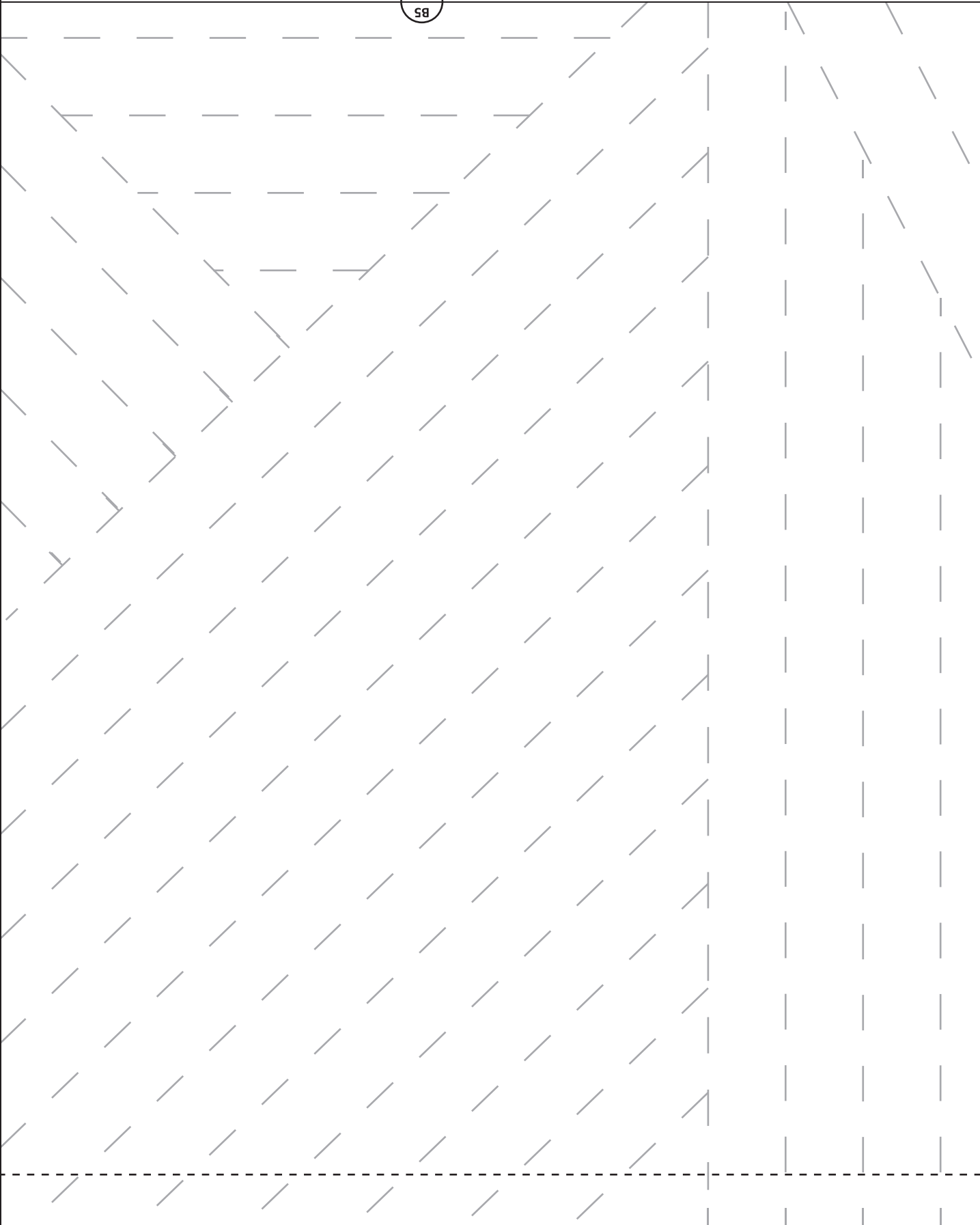
B4

A10
01V

A11
11V

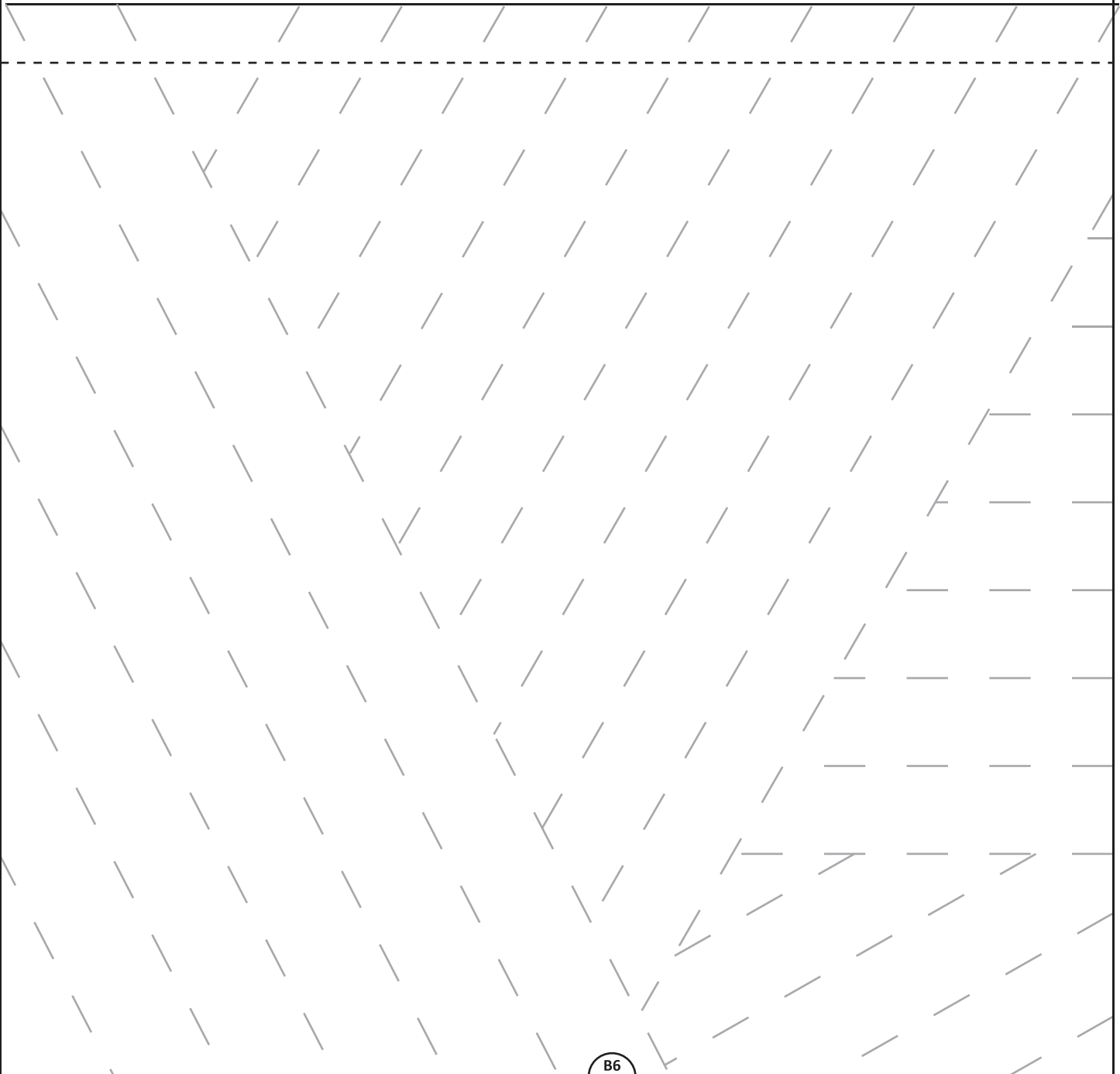


B5
5B



A11
11A

A12
21A

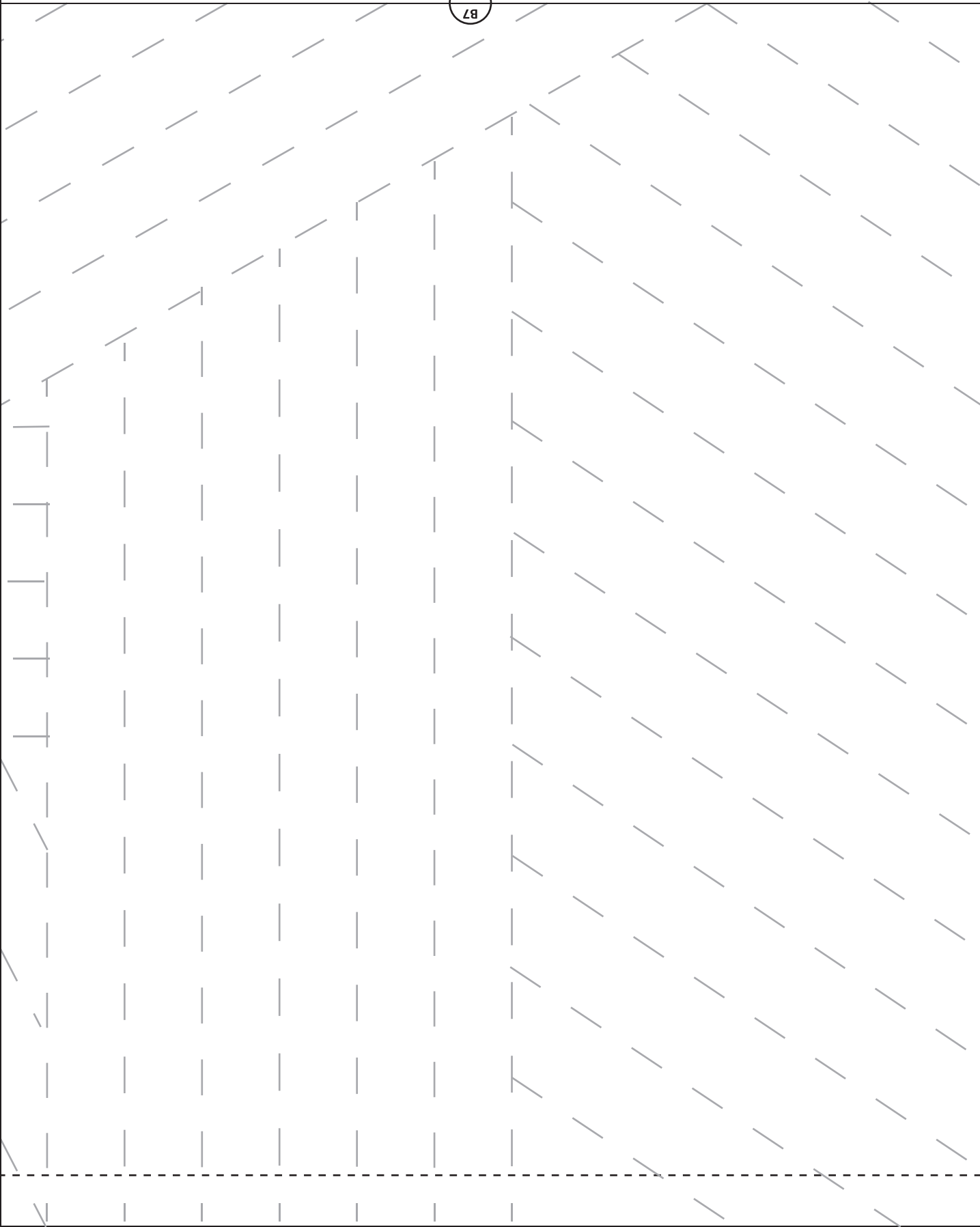


B6
98

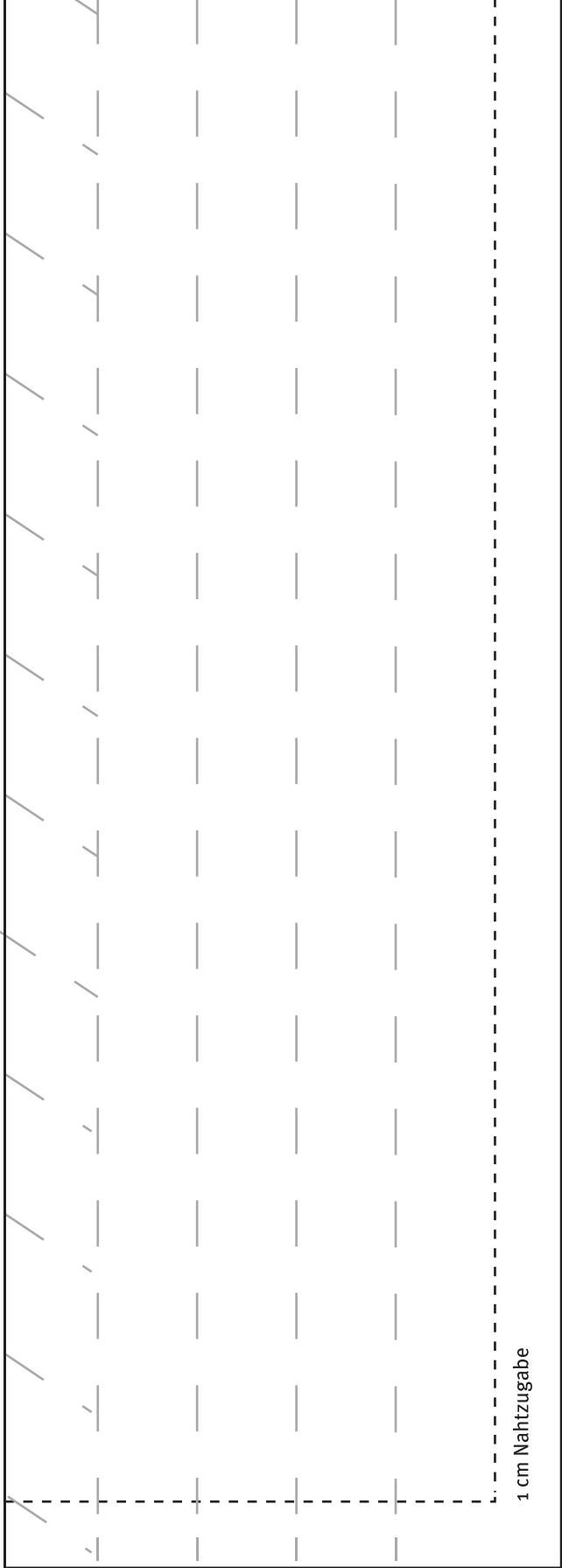
A12
21V

A13
31V

This section contains a large grid of dashed lines for handwriting practice. It is bounded by a solid horizontal line at the top and a dashed horizontal line just below it. The grid consists of 10 columns and 15 rows of horizontal dashed lines. The bottom section of the grid includes diagonal dashed lines for slanted writing practice.



A large rectangular area containing a grid of vertical lines. The grid consists of 10 vertical lines spaced evenly. On the left side of the grid, there are several horizontal lines of varying lengths, some extending from the left edge of the grid. A dashed line forms a smaller rectangle within the grid, starting from the top-left corner and extending to the right and down, leaving a gap at the bottom-right corner.



1 cm Nahtzugabe